

KPNA3 Polyclonal antibody

Catalog Number: 28050-1-AP

Basic Information

Catalog Number: 28050-1-AP	GenBank Accession Number: BC017355	Purification Method: Antigen affinity purification
Size: 150ul , Concentration: 650 ug/ml by Nanodrop;	GeneID (NCBI): 3839	Recommended Dilutions: WB 1:500-1:1000
Source: Rabbit	UNIPROT ID: O00505	IHC 1:50-1:500
Isotype: IgG	Full Name: karyopherin alpha 3 (importin alpha 4)	IF/ICC 1:200-1:800
Immunogen Catalog Number: AG27755	Calculated MW: 58 kDa	
	Observed MW: 57-60 kDa	

Applications

Tested Applications: WB, IHC, IF/ICC, ELISA	Positive Controls:
Species Specificity: human, mouse	WB : HepG2 cells,
Note-IHC: suggested antigen retrieval with TE buffer pH 9.0; (*) Alternatively, antigen retrieval may be performed with citrate buffer pH 6.0	IHC : mouse brain tissue, human brown disease
	IF/ICC : HepG2 cells,

Background Information

KPNA3, karyopherin subunit alpha 3, also known as SRP1 or IPOA4. It is expected to be located in cytoplasm and nucleus, the protein is ubiquitous and highly expressed in heart, skeletal muscle. The calculated molecular weight of KPNA3 is 57 kDa. Functions in nuclear protein import as an adapter protein for nuclear receptor KPNB1. Binds specifically and directly to substrates containing either a simple or bipartite NLS motif. Docking of the importin/substrate complex to the nuclear pore complex (NPC) is mediated by KPNB1 through binding to nucleoporin FxFG repeats and the complex is subsequently translocated through the pore by an energy requiring, Ran-dependent mechanism. At the nucleoplasmic side of the NPC, Ran binds to importin-beta and the three components separate and importin-alpha and -beta are re-exported from the nucleus to the cytoplasm where GTP hydrolysis releases Ran from importin.

Storage

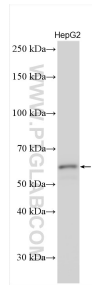
Storage:
Store at -20°C. Stable for one year after shipment.
Storage Buffer:
PBS with 0.02% sodium azide and 50% glycerol pH 7.3.
Aliquoting is unnecessary for -20°C storage

*** 20ul sizes contain 0.1% BSA

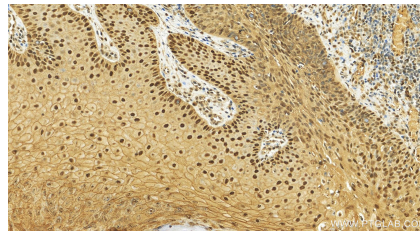
For technical support and original validation data for this product please contact:
T: 1 (888) 4PTGLAB (1-888-478-4522) (toll free in USA), or 1(312) 455-8498 (outside USA)
E: proteintech@ptglab.com
W: ptglab.com

This product is exclusively available under Proteintech Group brand and is not available to purchase from any other manufacturer.

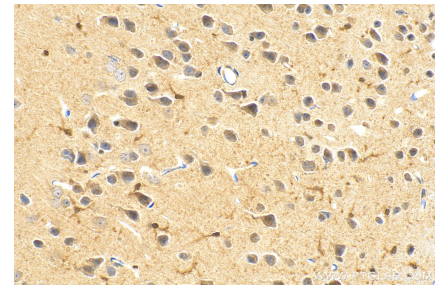
Selected Validation Data



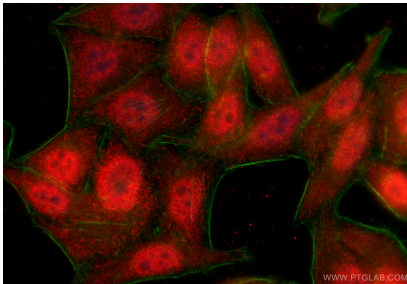
Various lysates were subjected to SDS PAGE followed by western blot with 28050-1-AP (KPNA3 antibody) at dilution of 1:500 incubated at room temperature for 1.5 hours.



Immunohistochemical analysis of paraffin-embedded human brain tissue slide using 28050-1-AP (KPNA3 antibody) at dilution of 1:100 (under 20x lens). Heat mediated antigen retrieval with Tris-EDTA buffer (pH 9.0).



Immunohistochemical analysis of paraffin-embedded mouse brain tissue slide using 28050-1-AP (KPNA3 antibody) at dilution of 1:100 (under 40x lens). Heat mediated antigen retrieval with Tris-EDTA buffer (pH 9.0).



Immunofluorescent analysis of (-20°C Ethanol) fixed HepG2 cells using KPNA3 antibody (28050-1-AP) at dilution of 1:400 and CoraLite®594-Conjugated Goat Anti-Rabbit IgG(H+L) (SA00013-4), CL488-Phalloidin (green).