

For Research Use Only

MRGPRESS Polyclonal antibody

Catalog Number: 28080-1-AP



Basic Information

Catalog Number: 28080-1-AP	GenBank Accession Number: BC104889	Purification Method: Antigen affinity purification
Size: 150ul , Concentration: 400 ug/ml by Nanodrop;	GeneID (NCBI): 116534	Recommended Dilutions: IHC 1:50-1:500
Source: Rabbit	UNIPROT ID: Q86SM8	
Isotype: IgG	Full Name: MAS-related GPR, member E	
Immunogen Catalog Number: AG24913	Calculated MW: 311 aa, 34 kDa	

Applications

Tested Applications: IHC, ELISA	Positive Controls: IHC : rat dorsal root ganglion tissue,
Species Specificity: Human, rat	
Note-IHC: suggested antigen retrieval with TE buffer pH 9.0; (*) Alternatively, antigen retrieval may be performed with citrate buffer pH 6.0	

Background Information

MRGPRESS (Mas-related G-protein coupled receptor member E, also named GPR167) may regulate nociceptor function or development, including the sensation or modulation of pain.

Storage

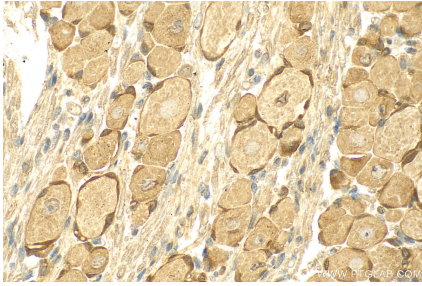
Storage:
Store at -20°C. Stable for one year after shipment.
Storage Buffer:
PBS with 0.02% sodium azide and 50% glycerol pH 7.3.
Aliquoting is unnecessary for -20°C storage

*** 20ul sizes contain 0.1% BSA

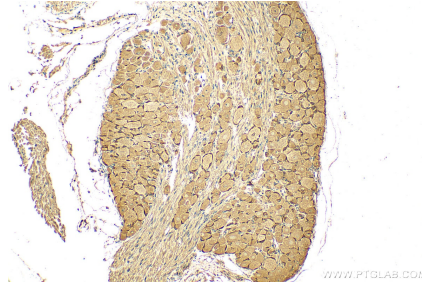
For technical support and original validation data for this product please contact:
T: 1 (888) 4PTGLAB (1-888-478-4522) (toll free in USA), or 1(312) 455-8498 (outside USA)
E: proteintech@ptglab.com
W: ptglab.com

This product is exclusively available under Proteintech Group brand and is not available to purchase from any other manufacturer.

Selected Validation Data



Immunohistochemical analysis of paraffin-embedded rat dorsal root ganglion tissue slide using 28080-1-AP (MRGPRE antibody) at dilution of 1:100 (under 40x lens). Heat mediated antigen retrieval with Tris-EDTA buffer (pH 9.0).



Immunohistochemical analysis of paraffin-embedded rat dorsal root ganglion tissue slide using 28080-1-AP (MRGPRE antibody) at dilution of 1:100 (under 10x lens). Heat mediated antigen retrieval with Tris-EDTA buffer (pH 9.0).