

For Research Use Only

CYP26A1 Polyclonal antibody

Catalog Number: 28081-1-AP



Basic Information

Catalog Number:

28081-1-AP

Size:

150ul, Concentration: 450 ug/ml by Nanodrop;

Source:

Rabbit

Isotype:

IgG

Immunogen Catalog Number:

AG24898

GenBank Accession Number:

BC157063

GeneID (NCBI):

1592

UNIPROT ID:

O43174

Full Name:

cytochrome P450, family 26, subfamily A, polypeptide 1

Calculated MW:

497 aa, 56 kDa

Observed MW:

50-56 kDa

Purification Method:

Antigen affinity purification

Recommended Dilutions:

WB 1:500-1:2000

IHC 1:50-1:500

IF-P 1:50-1:500

Applications

Tested Applications:

WB, IHC, IF-P, ELISA

Species Specificity:

human, mouse

Note-IHC: suggested antigen retrieval with TE buffer pH 9.0; (*) Alternatively, antigen retrieval may be performed with citrate buffer pH 6.0

Positive Controls:

WB: human placenta tissue,

IHC: human placenta tissue, mouse skeletal muscle tissue

IF-P: human placenta tissue,

Background Information

CYP26A1 (Cytochrome P450 Family 26 Subfamily A Member 1), also known as Cytochrome P450 26A1, CP26, CYP26, P450RA1, and P450RA11, is a member of the cytochrome P450 superfamily of enzymes, involved in retinoic acid (RA) metabolism and synthesis of cholesterol, steroids, and other lipids. CYP26A1 is essential for normal hindbrain patterning, vertebral identity, and development of posterior structures (PMID: 11157778).

Storage

Storage:

Store at -20°C. Stable for one year after shipment.

Storage Buffer:

PBS with 0.02% sodium azide and 50% glycerol pH 7.3.

Aliquoting is unnecessary for -20°C storage

*** 20ul sizes contain 0.1% BSA

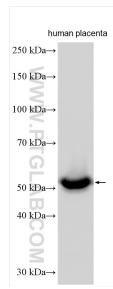
For technical support and original validation data for this product please contact:

T: 1 (888) 4PTGLAB (1-888-478-4522) (toll free in USA), or 1(312) 455-8498 (outside USA)

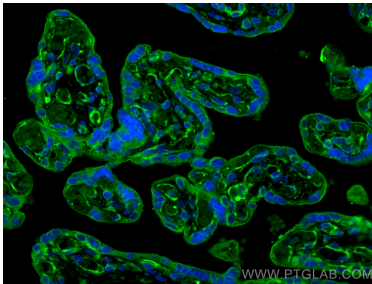
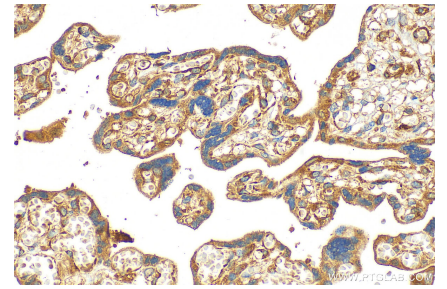
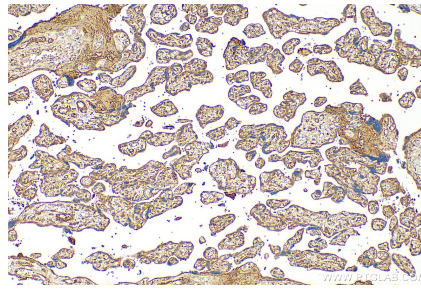
E: proteintech@ptglab.com
W: ptglab.com

This product is exclusively available under Proteintech Group brand and is not available to purchase from any other manufacturer.

Selected Validation Data



Human placenta tissue were subjected to SDS PAGE followed by western blot with 28081-1-AP (CYP26A1 antibody) at dilution of 1:1000 incubated at room temperature for 1.5 hours.



Immunofluorescent analysis of (4% PFA) fixed paraffin-embedded human placenta tissue using CYP26A1 antibody (28081-1-AP) at dilution of 1:200 and Multi-rAb CoraLite ® Plus 488-Goat Anti-Rabbit Recombinant Secondary Antibody (H+L) (RGAR002). Heat mediated antigen retrieval with Tris-EDTA buffer (pH 9.0).