

For Research Use Only

NPC1L1 Polyclonal antibody

Catalog Number: 28085-1-AP

2 Publications



Basic Information

Catalog Number: 28085-1-AP	GenBank Accession Number: NM_001101648	Purification Method: Antigen affinity purification
Size: 150ul , Concentration: 450 ug/ml by Nanodrop;	GeneID (NCBI): 29881	Recommended Dilutions: WB 1:500-1:2000 IHC 1:50-1:500
Source: Rabbit	Full Name: NPC1 (Niemann-Pick disease, type C1, gene)-like 1	
Isotype: IgG	Calculated MW: 149 kDa	
Immunogen Catalog Number: AG26277	Observed MW: 140-149 kDa	

Applications

Tested Applications: WB, IHC, ELISA	Positive Controls:
Cited Applications: WB	WB : HeLa cells, HepG2 cells
Species Specificity: Human	IHC : human liver tissue,
Cited Species: human, rat	
Note-IHC: suggested antigen retrieval with TE buffer pH 9.0; (*) Alternatively, antigen retrieval may be performed with citrate buffer pH 6.0	

Background Information

NPC1 like intracellular cholesterol transporter 1 (NPC1L1) is a multi-pass membrane protein which has 1332 amino acids and containing a conserved N-terminal Niemann-Pick C1 (NPC1) domain and a putative sterol-sensing domain (SSD). It is only found in the tubular membranes of primate hepatocytes and the brush-border membranes of the small intestine of mammals. PC1L1 is a key protein for intestinal absorption of cholesterol and plays an important role in cholesterol balance. Cholesterol contributes to cell proliferation, invasion and latency, and is essential for tumor formation and growth, so NPC1L1 plays a critical role in tumor development and spread (PMID: 36034854).

Notable Publications

Author	Pubmed ID	Journal	Application
Pengwei Chen	39716710	Int J Biol Macromol	WB
James Elste	38672177	Biomedicines	WB

Storage

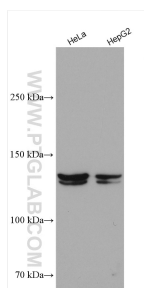
Storage:
Store at -20°C. Stable for one year after shipment.
Storage Buffer:
PBS with 0.02% sodium azide and 50% glycerol pH 7.3.
Aliquoting is unnecessary for -20°C storage

*** 20ul sizes contain 0.1% BSA

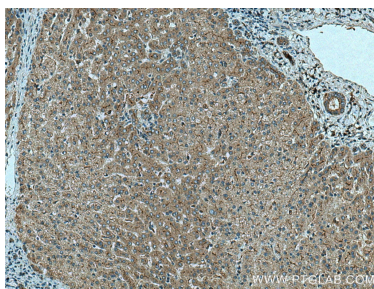
For technical support and original validation data for this product please contact:
T: 1 (888) 4PTGLAB (1-888-478-4522) (toll free in USA), or 1(312) 455-8498 (outside USA)
E: proteintech@ptglab.com
W: ptglab.com

This product is exclusively available under Proteintech Group brand and is not available to purchase from any other manufacturer.

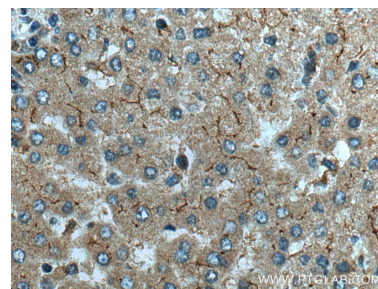
Selected Validation Data



Various lysates were subjected to SDS PAGE followed by western blot with 28085-1-AP (NPC1L1 antibody) at dilution of 1:1000 incubated at room temperature for 1.5 hours.



Immunohistochemical analysis of paraffin-embedded human liver tissue slide using 28085-1-AP (NPC1L1 antibody) at dilution of 1:200 (under 10x lens). Heat mediated antigen retrieval with Tris-EDTA buffer (pH 9.0).



Immunohistochemical analysis of paraffin-embedded human liver tissue slide using 28085-1-AP (NPC1L1 antibody) at dilution of 1:200 (under 40x lens). Heat mediated antigen retrieval with Tris-EDTA buffer (pH 9.0).