

For Research Use Only

# CUL3 Polyclonal antibody, PBS Only

Catalog Number:28087-1-PBS



## Basic Information

<b>Catalog Number:</b> 28087-1-PBS	<b>GenBank Accession Number:</b> BC039598	<b>Purification Method:</b> Antigen affinity purification
<b>Size:</b> 100ug, Concentration: 1 mg/ml by Nanodrop;	<b>GeneID (NCBI):</b> 8452	
<b>Source:</b> Rabbit	<b>UNIPROT ID:</b> Q13618	
<b>Isotype:</b> IgG	<b>Full Name:</b> cullin 3	
<b>Immunogen Catalog Number:</b> AG28004	<b>Calculated MW:</b> 89 kDa	
	<b>Observed MW:</b> 80-88 kDa	

## Applications

**Tested Applications:**  
WB, IHC, IP, Indirect ELISA

**Species Specificity:**  
human, mouse, rat

## Background Information

Cullin-RING-based BCR (BTB-CUL3-RBX1) E3 ligase are the largest family of ubiquitin ligases which mediate the ubiquitination and subsequent proteasomal degradation of target proteins. One of seven cullin proteins serves as a scaffold protein for the assembly of the multisubunit ubiquitin ligase complex. CUL3 (Cullin-3) ubiquitin ligase complex targets multiple substrate for ubiquitination including cyclin E and of cyclin D1. Defects in CUL3 are the cause of Pseudohypoaldosteronism type 2E (PHA2E) characterized by severe hypertension, hyperkalemia, hyperchloremia, hyperchloremic metabolic acidosis, and correction of physiologic abnormalities by thiazide diuretics.

## Storage

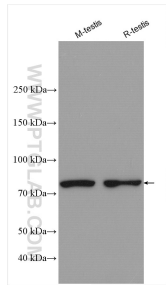
**Storage:**  
Store at -80°C.

**Storage Buffer:**  
PBS only, pH7.3

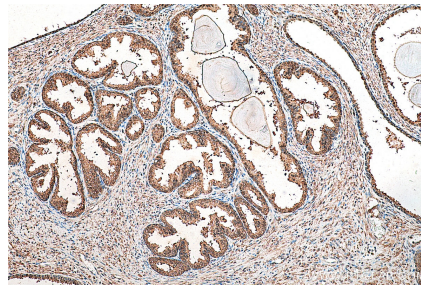
For technical support and original validation data for this product please contact:  
T: 1 (888) 4PTGLAB (1-888-478-4522) (toll free in USA), or 1(312) 455-8498 (outside USA) E: proteintech@ptglab.com W: ptglab.com

This product is exclusively available under Proteintech Group brand and is not available to purchase from any other manufacturer.

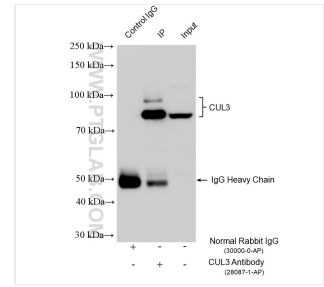
## Selected Validation Data



Various lysates were subjected to SDS PAGE followed by western blot with 28087-1-AP (CUL3 antibody) at dilution of 1:800 incubated at room temperature for 1.5 hours. This data was developed using the same antibody clone with 28087-1-PBS in a different storage buffer formulation.



Immunohistochemical analysis of paraffin-embedded human prostate cancer tissue slide using 28087-1-AP (CUL3 antibody) at dilution of 1:200 (under 10x lens). Heat mediated antigen retrieval with Tris-EDTA buffer (pH 9.0). This data was developed using the same antibody clone with 28087-1-PBS in a different storage buffer formulation.



IP result of anti-CUL3 (IP:28087-1-AP, 4ug; Detection:28087-1-AP 1:600) with mouse testis tissue lysate 1680 ug. This data was developed using the same antibody clone with 28087-1-PBS in a different storage buffer formulation.