

For Research Use Only

GPR141 Polyclonal antibody

Catalog Number: 28096-1-AP



Basic Information

Catalog Number: 28096-1-AP	GenBank Accession Number: BC120951	Purification Method: Antigen affinity purification
Size: 150ul , Concentration: 400 ug/ml by Nanodrop;	GeneID (NCBI): 353345	Recommended Dilutions: IHC 1:50-1:500
Source: Rabbit	UNIPROT ID: Q7Z602	
Isotype: IgG	Full Name: G protein-coupled receptor 141	
Immunogen Catalog Number: AG23129	Calculated MW: 305 aa, 35 kDa	

Applications

Tested Applications: IHC, ELISA	Positive Controls: IHC : human kidney tissue, mouse brain tissue
Species Specificity: Human, mouse	
Note-IHC: suggested antigen retrieval with TE buffer pH 9.0; (*) Alternatively, antigen retrieval may be performed with citrate buffer pH 6.0	

Background Information

GPR141 (G-protein-coupled receptor 141) is a class A orphan receptor molecule of the rhodopsin family. Increased GPR141 expression enhances the migratory behavior of breast cancer, driving oncogenic pathways both in vitro and in vivo through activation of epithelial to mesenchymal transition (EMT), oncogenic mediators, and regulation of p-mTOR/p53 signaling (PMID: 37204251).

Storage

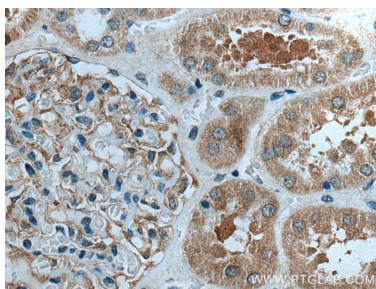
Storage:
Store at -20°C. Stable for one year after shipment.
Storage Buffer:
PBS with 0.02% sodium azide and 50% glycerol pH 7.3.
Aliquoting is unnecessary for -20°C storage

*** 20ul sizes contain 0.1% BSA

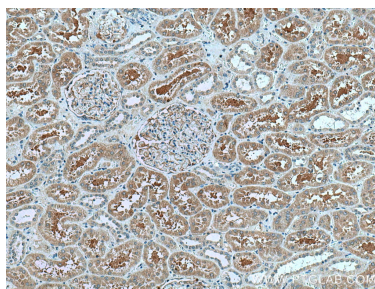
For technical support and original validation data for this product please contact:
T: 1 (888) 4PTGLAB (1-888-478-4522) (toll free in USA), or 1(312) 455-8498 (outside USA)
E: proteintech@ptglab.com
W: ptglab.com

This product is exclusively available under Proteintech Group brand and is not available to purchase from any other manufacturer.

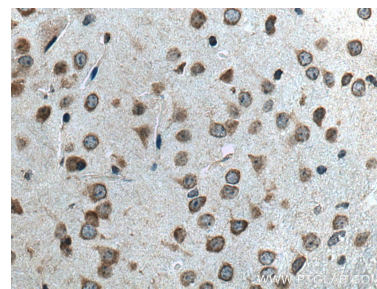
Selected Validation Data



Immunohistochemical analysis of paraffin-embedded human kidney tissue slide using 28096-1-AP (GPR141 antibody) at dilution of 1:200 (under 40x lens). Heat mediated antigen retrieval with Tris-EDTA buffer (pH 9.0).



Immunohistochemical analysis of paraffin-embedded human kidney tissue slide using 28096-1-AP (GPR141 antibody) at dilution of 1:200 (under 10x lens). Heat mediated antigen retrieval with Tris-EDTA buffer (pH 9.0).



Immunohistochemical analysis of paraffin-embedded mouse brain tissue slide using 28096-1-AP (GPR141 antibody) at dilution of 1:200 (under 40x lens). Heat mediated antigen retrieval with Tris-EDTA buffer (pH 9.0).