

For Research Use Only

KL Polyclonal antibody

Catalog Number: 28100-1-AP **13 Publications**



Basic Information

Catalog Number: 28100-1-AP	GenBank Accession Number: NM_004795	Purification Method: Antigen affinity purification
Size: 150ul , Concentration: 800 µg/ml by Nanodrop;	GeneID (NCBI): 9365	Recommended Dilutions: WB 1:500-1:2000 IP 0.5-4.0 ug for 1.0-3.0 mg of total protein lysate IHC 1:50-1:500
Source: Rabbit	Full Name: klotho	
Isotype: IgG	Calculated MW: 116 kDa	
Immunogen Catalog Number: AG27759	Observed MW: 62 kDa, 130 kDa	

Applications

Tested Applications: IHC, IP, WB, ELISA	Positive Controls:
Cited Applications: IHC, WB	WB : mouse kidney tissue, rat kidney tissue
Species Specificity: Human, Mouse, Rat	IP : mouse kidney tissue,
Cited Species: human, rat, mouse	IHC : human kidney tissue, mouse brain tissue

Note-IHC: suggested antigen retrieval with TE buffer pH 9.0; (*) Alternatively, antigen retrieval may be performed with citrate buffer pH 6.0

Background Information

Notable Publications

Author	Pubmed ID	Journal	Application
Li Lin	36325267	Genet Res (Camb)	WB
Shengnan Zhou	36277690	Front Endocrinol (Lausanne)	WB
Hao Meng	34807408	Hum Cell	WB

Storage

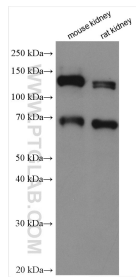
Storage:
Store at -20°C. Stable for one year after shipment.
Storage Buffer:
PBS with 0.02% sodium azide and 50% glycerol pH 7.3.
Aliquoting is unnecessary for -20°C storage

*** 20ul sizes contain 0.1% BSA

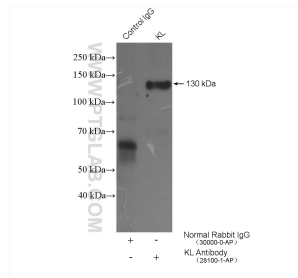
For technical support and original validation data for this product please contact:
T: 1 (888) 4PTGLAB (1-888-478-4522) (toll free in USA), or 1(312) 455-8498 (outside USA)
E: proteintech@ptglab.com
W: ptglab.com

This product is exclusively available under Proteintech Group brand and is not available to purchase from any other manufacturer.

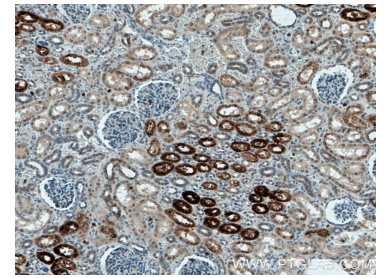
Selected Validation Data



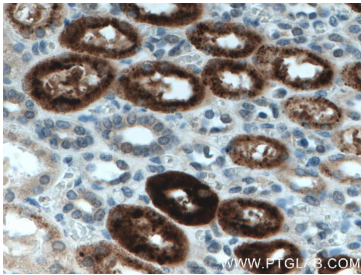
Various lysates were subjected to SDS PAGE followed by western blot with 28100-1-AP (KL antibody) at dilution of 1:1000 incubated at room temperature for 1.5 hours.



IP result of anti-KL (IP:28100-1-AP, 4ug; Detection:28100-1-AP 1:300) with mouse kidney tissue lysate 4000 ug.



Immunohistochemical analysis of paraffin-embedded human kidney tissue slide using 28100-1-AP (KL antibody) at dilution of 1:200 (under 10x lens. Heat mediated antigen retrieval with Tris-EDTA buffer (pH 9.0).



Immunohistochemical analysis of paraffin-embedded human kidney tissue slide using 28100-1-AP (KL antibody) at dilution of 1:200 (under 40x lens. Heat mediated antigen retrieval with Tris-EDTA buffer (pH 9.0).