

For Research Use Only

LIMD1 Polyclonal antibody

Catalog Number: 28106-1-AP

1 Publications



Basic Information

Catalog Number:

28106-1-AP

Size:

150ul , Concentration: 900 ug/ml by Nanodrop and 467 ug/ml by Bradford method using BSA as the standard;

Source:

Rabbit

Isotype:

IgG

Immunogen Catalog Number:

AG27974

GenBank Accession Number:

NM_014240

GeneID (NCBI):

8994

UNIPROT ID:

Q9UGP4

Full Name:

LIM domains containing 1

Calculated MW:

72 aa

Observed MW:

72 kDa

Purification Method:

Antigen affinity purification

Recommended Dilutions:

WB 1:1000-1:8000

IP 0.5-4.0 ug for 1.0-3.0 mg of total protein lysate

IF/ICC 1:200-1:800

Applications

Tested Applications:

WB, IF/ICC, IP, ELISA

Cited Applications:

IF

Species Specificity:

Human

Cited Species:

human

Positive Controls:

WB : A549 cells, HeLa cells

IP : HeLa cells,

IF/ICC : HeLa cells,

Background Information

LIMD1 is a member of the Ajuba family of LIM domain-containing proteins, these kinds of proteins have been shown to play a role in intracellular signaling, transcriptional regulation and cellular differentiation, proliferation and migration (PMID:17174104). LIMD1 predominantly localizes to the cytoplasm especially in the E-cadherin cell-cell adhesive junction, yet also translocates to the nucleus when functions as an RB corepressor (PMID:19060205). And LIMD1 acts as a scaffolding protein to form a PHD-LIMD1-VHL axis, facilitating HIF1 α ubiquitination and degradation by the proteasome (PMID:22800800). LIMD1 specifically interacts with retinoblastoma protein (pRB), inhibits E2F-mediated transcription, and suppresses the expression of the majority of genes with E2F-1-responsive elements. As a tumor suppressor, LIMD1 blocks tumor growth in vitro and in vivo, and is frequently down-regulated in human lung tumors (PMID:15542589), and it also be detected in normal and breast cancer tissues. LIMD1 protein exists several phosphorylation sites, which may affect its theoretical molecular weight when tested. Proteintech's 28106-1-AP antibody was generated by 133 amino acids, it could recognize the full-length protein in applications.

Notable Publications

Author	Pubmed ID	Journal	Application
Peigang Liang	38466167	J Cell Biol	IF

Storage

Storage:

Store at -20°C. Stable for one year after shipment.

Storage Buffer:

PBS with 0.02% sodium azide and 50% glycerol pH 7.3.

Aliquoting is unnecessary for -20°C storage

*** 20ul sizes contain 0.1% BSA

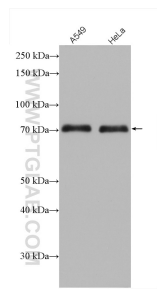
For technical support and original validation data for this product please contact:

T: 1 (888) 4PTGLAB (1-888-478-4522) (toll free in USA), or 1(312) 455-8498 (outside USA)

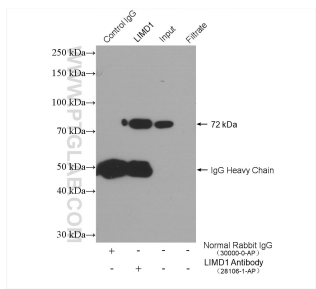
E: proteintech@ptglab.com
W: ptglab.com

This product is exclusively available under Proteintech Group brand and is not available to purchase from any other manufacturer.

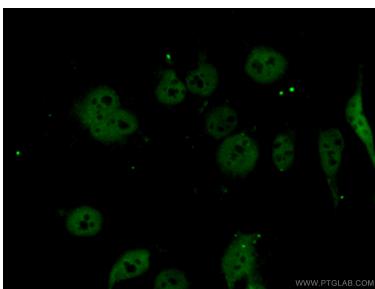
Selected Validation Data



Various lysates were subjected to SDS PAGE followed by western blot with 28106-1-AP (LIMD1 antibody) at dilution of 1:4000 incubated at room temperature for 1.5 hours.



IP result of anti-LIMD1 (IP:28106-1-AP, 4ug; Detection:28106-1-AP 1:1000) with HeLa cells lysate 2640 ug.



Immunofluorescent analysis of (4% PFA) fixed HeLa cells using 28106-1-AP (LIMD1 antibody) at dilution of 1:400 and Alexa Fluor 488-Conjugated Goat Anti-Rabbit IgG(H+L).