

For Research Use Only

CDC25B Polyclonal antibody

Catalog Number: 28109-1-AP

1 Publications



Basic Information

Catalog Number:

28109-1-AP

Size:

150ul, Concentration: 1000 ug/ml by Nanodrop and 533 ug/ml by Bradford method using BSA as the standard;

Source:

Rabbit

Isotype:

IgG

Immunogen Catalog Number:

AG27138

GenBank Accession Number:

BC006395

GeneID (NCBI):

994

UNIPROT ID:

P30305

Full Name:

cell division cycle 25 homolog B (S. pombe)

Calculated MW:

65 kDa

Observed MW:

60-70 kDa

Purification Method:

Antigen affinity purification

Recommended Dilutions:

WB 1:500-1:2000

IHC 1:50-1:500

Applications

Tested Applications:

WB, IHC, ELISA

Cited Applications:

WB, IHC

Species Specificity:

human

Cited Species:

mouse

Note-IHC: suggested antigen retrieval with TE buffer pH 9.0; (*) Alternatively, antigen retrieval may be performed with citrate buffer pH 6.0

Positive Controls:

WB : HepG2 cells, HeLa cells

IHC : human ovary cancer tissue,

Background Information

CDC25B, also named as CDC25HU2, belongs to the MPI phosphatase family. It is a tyrosine protein phosphatase which functions as a dosage-dependent inducer of mitotic progression. CDC25B directly dephosphorylates CDK1 and stimulates its kinase activity. The three isoforms seem to have a different level of activity.

Notable Publications

Author	Pubmed ID	Journal	Application
Dexiang Feng	35567596	Cell Biol Toxicol	WB, IHC

Storage

Storage:

Store at -20°C. Stable for one year after shipment.

Storage Buffer:

PBS with 0.02% sodium azide and 50% glycerol pH 7.3.

Aliquoting is unnecessary for -20°C storage

*** 20ul sizes contain 0.1% BSA

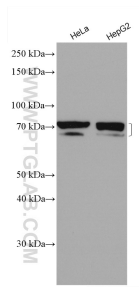
For technical support and original validation data for this product please contact:

T: 1 (888) 4PTGLAB (1-888-478-4522) (toll free in USA), or 1(312) 455-8498 (outside USA)

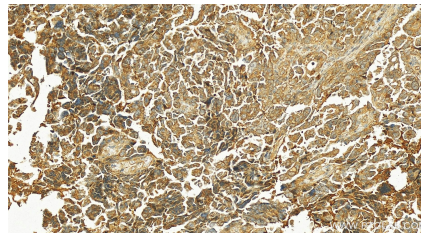
E: proteintech@ptglab.com
W: ptglab.com

This product is exclusively available under Proteintech Group brand and is not available to purchase from any other manufacturer.

Selected Validation Data



Various lysates were subjected to SDS PAGE followed by western blot with 28109-1-AP (CDC25B antibody) at dilution of 1:1000 incubated at room temperature for 1.5 hours.



Immunohistochemical analysis of paraffin-embedded human ovarian cancer slide using 28109-1-AP (CDC25B antibody) at dilution of 1:200 (under 20x lens). Heat mediated antigen retrieval with Tris-EDTA buffer (pH 9.0).