

For Research Use Only

L3MBTL3 Polyclonal antibody

Catalog Number: 28112-1-AP



Basic Information

Catalog Number: 28112-1-AP	GenBank Accession Number: BC060845	Purification Method: Antigen affinity purification
Size: 150ul , Concentration: 2000 ug/ml by Nanodrop;	GeneID (NCBI): 84456	Recommended Dilutions: WB 1:2000-1:10000
Source: Rabbit	UNIPROT ID: Q96JM7	IHC 1:50-1:500
Isotype: IgG	Full Name: l(3)mbt-like 3 (Drosophila)	IF/ICC 1:50-1:500
Immunogen Catalog Number: AG27136	Calculated MW: 88 aa, 3 kDa	
	Observed MW: 88 kDa	

Applications

Tested Applications: WB, IHC, IF/ICC, ELISA	Positive Controls:
Species Specificity: Human, Mouse	WB : HEK-293T cells, HeLa cells, Jurkat cells
Note-IHC: suggested antigen retrieval with TE buffer pH 9.0; (*) Alternatively, antigen retrieval may be performed with citrate buffer pH 6.0	IHC : mouse cerebellum tissue,
	IF/ICC : U2OS cells,

Background Information

L3MBTL3, also named as MBT1 and KIAA1798, belongs to the Malignant brain tumor (MBT) family. L3MBTL3 can bind to methyl lysine in histone, further affecting the transcription and its abnormal regulation associated with many diseases (PMID: 34373992). Additionally, researches have shown that L3MBTL3 plays a role in medulloblastoma formation and normal hematopoiesis in humans (PMID: 26317848). L3MBTL3 has 2 isoforms with the molecular mass of 86 and 88 kDa.

Storage

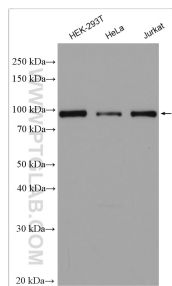
Storage:
Store at -20°C. Stable for one year after shipment.
Storage Buffer:
PBS with 0.02% sodium azide and 50% glycerol pH 7.3.
Aliquoting is unnecessary for -20°C storage

*** 20ul sizes contain 0.1% BSA

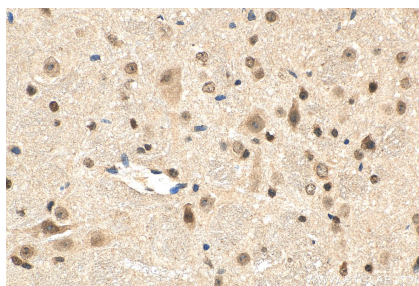
For technical support and original validation data for this product please contact:
T: 1 (888) 4PTGLAB (1-888-478-4522) (toll free in USA), or 1(312) 455-8498 (outside USA)
E: proteintech@ptglab.com
W: ptglab.com

This product is exclusively available under Proteintech Group brand and is not available to purchase from any other manufacturer.

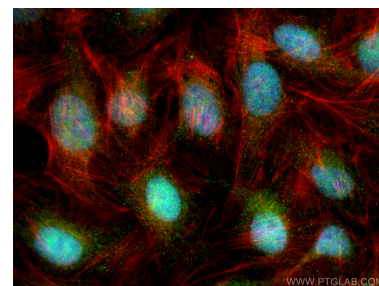
Selected Validation Data



Various lysates were subjected to SDS PAGE followed by western blot with 28112-1-AP (L3MBTL3 antibody) at dilution of 1:5000 incubated at room temperature for 1.5 hours.



Immunohistochemical analysis of paraffin-embedded mouse cerebellum tissue slide using 28112-1-AP (L3MBTL3 antibody) at dilution of 1:200 (under 40x lens). Heat mediated antigen retrieval with Tris-EDTA buffer (pH 9.0).



Immunofluorescent analysis of (4% PFA) fixed U2OS cells using L3MBTL3 antibody (28112-1-AP) at dilution of 1:200 and CoraLite®488-Conjugated AffiniPure Goat Anti-Rabbit IgG(H+L), CL594-Phalloidin (red).