

For Research Use Only

# POLH Polyclonal antibody

Catalog Number: 28133-1-AP



## Basic Information

**Catalog Number:**

28133-1-AP

**Size:**

150ul, Concentration: 300 ug/ml by Nanodrop and 267 ug/ml by Bradford method using BSA as the standard;

**Source:**

Rabbit

**Isotype:**

IgG

**Immunogen Catalog Number:**

AG27973

**GenBank Accession Number:**

BC015742

**GeneID (NCBI):**

5429

**UNIPROT ID:**

Q9Y253

**Full Name:**

polymerase (DNA directed), eta

**Calculated MW:**

713aa, 78 kDa; 414aa, 46 kDa

**Observed MW:**

78-85 kDa

**Purification Method:**

Antigen affinity purification

**Recommended Dilutions:**

WB 1:500-1:1000

## Applications

**Tested Applications:**

WB, ELISA

**Species Specificity:**

Human

**Positive Controls:**

WB : BxPC-3 cells, HeLa cells, COLO 320 cells, HEK-293T cells

## Storage

**Storage:**

Store at -20°C. Stable for one year after shipment.

**Storage Buffer:**

PBS with 0.02% sodium azide and 50% glycerol pH 7.3.

Aliquoting is unnecessary for -20°C storage

**\*\*\* 20ul sizes contain 0.1% BSA**

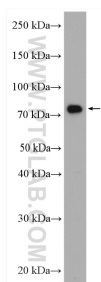
For technical support and original validation data for this product please contact:

T: 1 (888) 4PTGLAB (1-888-478-4522) (toll free in USA), or 1(312) 455-8498 (outside USA)

E: [proteintech@ptglab.com](mailto:proteintech@ptglab.com)  
W: [ptglab.com](http://ptglab.com)

This product is exclusively available under Proteintech Group brand and is not available to purchase from any other manufacturer.

## Selected Validation Data



BxPC-3 cells were subjected to SDS PAGE followed by western blot with 28133-1-AP (POLH antibody) at dilution of 1:600 incubated at room temperature for 1.5 hours.