

For Research Use Only

CENPE Polyclonal antibody

Catalog Number: 28142-1-AP

7 Publications



Basic Information

Catalog Number:

28142-1-AP

Size:

150ul , Concentration: 550 ug/ml by Nanodrop and 300 ug/ml by Bradford method using BSA as the standard;

Source:

Rabbit

Isotype:

IgG

Immunogen Catalog Number:

AG27230

GenBank Accession Number:

NM_001286734

GeneID (NCBI):

1062

UNIPROT ID:

Q02224

Full Name:

centromere protein E, 312kDa

Calculated MW:

316 kDa

Observed MW:

300-316 kDa

Purification Method:

Antigen affinity purification

Recommended Dilutions:

WB 1:1000-1:4000

Applications

Tested Applications:

WB, ELISA

Cited Applications:

WB, IHC

Species Specificity:

Human

Cited Species:

human, mouse

Positive Controls:

WB : HEK-293 cells, HeLa cells, HepG2 cells

Notable Publications

Author	Pubmed ID	Journal	Application
Xishan Li	32509165	Am J Transl Res	WB
Zhen-Yu She	35680098	Biochim Biophys Acta Mol Cell Res	WB
Xueqiang Zhu	30716092	PLoS One	IHC

Storage

Storage:

Store at -20°C. Stable for one year after shipment.

Storage Buffer:

PBS with 0.02% sodium azide and 50% glycerol, pH7.3

Aliquoting is unnecessary for -20°C storage

*** 20ul sizes contain 0.1% BSA

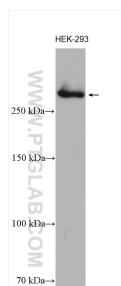
For technical support and original validation data for this product please contact:

T: 1 (888) 4PTGLAB (1-888-478-4522) (toll free in USA), or 1(312) 455-8498 (outside USA)

E: proteintech@ptglab.com
W: ptglab.com

This product is exclusively available under Proteintech Group brand and is not available to purchase from any other manufacturer.

Selected Validation Data



HEK-293 cells lysate were subjected to SDS PAGE followed by western blot with 28142-1-AP (CENPE antibody) at dilution of 1:2000 incubated at room temperature for 1.5 hours.