

For Research Use Only

DPP6 Polyclonal antibody

Catalog Number: 28143-1-AP



Basic Information

Catalog Number: 28143-1-AP	GenBank Accession Number: BC150304	Purification Method: Antigen affinity purification
Size: 150ul , Concentration: 350 µg/ml by Nanodrop;	GeneID (NCBI): 1804	Recommended Dilutions: WB 1:1000-1:8000
Source: Rabbit	Full Name: dipeptidyl-peptidase 6	
Isotype: IgG	Observed MW: 98-101 kDa	
Immunogen Catalog Number: AG27338		

Applications

Tested Applications: WB, ELISA	Positive Controls: WB : mouse brain tissue, rat brain tissue
Species Specificity: Human, mouse, rat	

Background Information

DPP6 (Dipeptidyl aminopeptidase-like protein 6) is also named as DPPX and Dipeptidyl peptidase VI (DPP VI). DPP6 is a type II transmembrane protein, and DPP6 is a multifunctional protein with considerable impact on brain development and function (PMID: 35395074). In breast cancer tissues, DPP6 has low expression at the transcription and protein levels, and DPP6 may serve as a tumour suppressor in tumour development (PMID: 36531033).

Storage

Storage:
Store at -20°C. Stable for one year after shipment.
Storage Buffer:
PBS with 0.02% sodium azide and 50% glycerol pH 7.3.
Aliquoting is unnecessary for -20°C storage

*** 20ul sizes contain 0.1% BSA

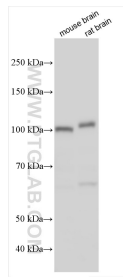
For technical support and original validation data for this product please contact:

T: 1 (888) 4PTGLAB (1-888-478-4522) (toll free in USA), or 1(312) 455-8498 (outside USA)

E: proteintech@ptglab.com
W: ptglab.com

This product is exclusively available under Proteintech Group brand and is not available to purchase from any other manufacturer.

Selected Validation Data



Various lysates were subjected to SDS PAGE followed by western blot with 28143-1-AP (DPP6 antibody) at dilution of 1:4000 incubated at room temperature for 1.5 hours.