

For Research Use Only

DCHS1 Polyclonal antibody, PBS Only

Catalog Number: 28144-1-PBS



Basic Information

Catalog Number: 28144-1-PBS	GenBank Accession Number: NM_003737	Purification Method: Antigen affinity purification
Size: 100ug , Concentration: 1 mg/ml by Nanodrop;	GeneID (NCBI): 8642	
Source: Rabbit	UNIPROT ID: Q96JQ0	
Isotype: IgG	Full Name: dachous 1 (Drosophila)	
Immunogen Catalog Number: AG27226	Calculated MW: 346 kDa	
	Observed MW: ~350 kDa	

Applications

Tested Applications:
WB, IF-P, Indirect ELISA

Species Specificity:
human, mouse

Background Information

DCHS1 is one of two known pathogenic genes associated with mitral valve prolapse (MVP), a common cardiac valve disease (PMID: 33225636). Dchs1 and Fat4 function as a ligand-receptor pair during murine development and these genes are required in multiple organs (PMID: 21303848).

Storage

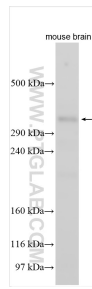
Storage:
Store at -80°C.

Storage Buffer:
PBS only, pH7.3

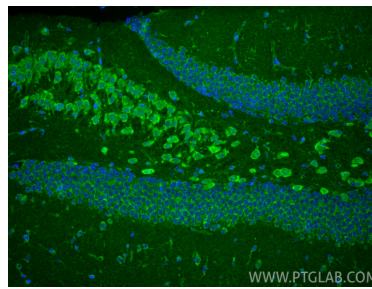
For technical support and original validation data for this product please contact:
T: 1 (888) 4PTGLAB (1-888-478-4522) (toll free in USA), or 1(312) 455-8498 (outside USA) E: proteintech@ptglab.com
W: ptglab.com

This product is exclusively available under Proteintech Group brand and is not available to purchase from any other manufacturer.

Selected Validation Data



mouse brain tissue were subjected to SDS PAGE followed by western blot with 28144-1-AP (DCCHS1 antibody) at dilution of 1:500 incubated at room temperature for 1.5 hours. This data was developed using the same antibody clone with 28144-1-PBS in a different storage buffer formulation.



Immunofluorescent analysis of (4% PFA) fixed paraffin-embedded mouse brain tissue using DCCHS1 antibody (28144-1-AP) at dilution of 1:200 and CoraLite®488-Conjugated Goat Anti-Rabbit IgG(H+L) (SA00013-2). Heat mediated antigen retrieval with Tris-EDTA buffer (pH 9.0). This data was developed using the same antibody clone with 28144-1-PBS in a different storage buffer formulation.