

For Research Use Only

# PLEKHH3 Polyclonal antibody

Catalog Number: 28154-1-AP



## Basic Information

<b>Catalog Number:</b> 28154-1-AP	<b>GenBank Accession Number:</b> BC052978	<b>Purification Method:</b> Antigen affinity purification
<b>Size:</b> 150ul , Concentration: 240 µg/ml by Nanodrop and 233 µg/ml by Bradford method using BSA as the standard;	<b>GeneID (NCBI):</b> 79990	<b>Recommended Dilutions:</b> WB 1:500-1:2000
<b>Source:</b> Rabbit	<b>Full Name:</b> pleckstrin homology domain containing, family H (with MyTH4 domain) member 3	
<b>Isotype:</b> IgG	<b>Calculated MW:</b> 793 aa, 85 kDa	
<b>Immunogen Catalog Number:</b> AG28001	<b>Observed MW:</b> 85 and 80 kDa	

## Applications

<b>Tested Applications:</b> WB, ELISA	<b>Positive Controls:</b> WB : LNCaP cells, mouse brain tissue
<b>Species Specificity:</b> Human, Mouse	

## Background Information

PLEKHH3, a gene related to endothelial tight junction, is associated with obstructive sleep apnea (OSA) and angiogenesis. It has been reported that the expression of PLEKHH3 protein was increased in the OSA patients. PLEKHH3 may play a key role in OSA and angiogenesis by specifically regulating the endothelial cells formation of tight junctions. 28154-1-AP detects the isoforms of PLEKHH3 protein around 80-85 kDa in SDS-PAGE. (PMID:28520763)

## Storage

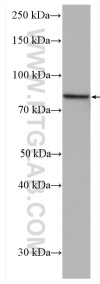
**Storage:**  
Store at -20°C. Stable for one year after shipment.  
**Storage Buffer:**  
PBS with 0.02% sodium azide and 50% glycerol pH 7.3.  
Aliquoting is unnecessary for -20°C storage

\*\*\* 20ul sizes contain 0.1% BSA

For technical support and original validation data for this product please contact:  
T: 1 (888) 4PTGLAB (1-888-478-4522) (toll free in USA), or 1(312) 455-8498 (outside USA)  
E: proteintech@ptglab.com  
W: ptglab.com

This product is exclusively available under Proteintech Group brand and is not available to purchase from any other manufacturer.

## Selected Validation Data



LNCaP cells were subjected to SDS PAGE followed by western blot with 28154-1-AP (PLEKH3 antibody) at dilution of 1:1000 incubated at room temperature for 1.5 hours.