

For Research Use Only

ARGLU1 Polyclonal antibody

Catalog Number: 28155-1-AP



Basic Information

Catalog Number:

28155-1-AP

Size:

150ul , Concentration: 350 ug/ml by Nanodrop and 267 ug/ml by Bradford method using BSA as the standard;

Source:

Rabbit

Isotype:

IgG

Immunogen Catalog Number:

AG28051

GenBank Accession Number:

BC071587

GeneID (NCBI):

55082

UNIPROT ID:

Q9NWB6

Full Name:

arginine and glutamate rich 1

Calculated MW:

273 aa, 33 kDa

Observed MW:

36 kDa

Purification Method:

Antigen affinity purification

Recommended Dilutions:

WB 1:1000-1:8000

Applications

Tested Applications:

WB, ELISA

Species Specificity:

Human, mouse

Positive Controls:

WB : HL-60 cells, HEK-293 cells, mouse spleen tissue

Storage

Storage:

Store at -20°C. Stable for one year after shipment.

Storage Buffer:

PBS with 0.02% sodium azide and 50% glycerol pH 7.3.

Aliquoting is unnecessary for -20°C storage

*** 20ul sizes contain 0.1% BSA

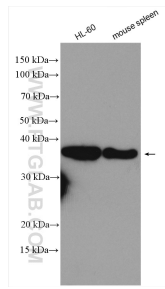
For technical support and original validation data for this product please contact:

T: 1 (888) 4PTGLAB (1-888-478-4522) (toll free in USA), or 1(312) 455-8498 (outside USA)

E: proteintech@ptglab.com
W: ptglab.com

This product is exclusively available under Proteintech Group brand and is not available to purchase from any other manufacturer.

Selected Validation Data



Various lysates were subjected to SDS PAGE followed by western blot with 28155-1-AP (ARGLU1 antibody) at dilution of 1:4000 incubated at room temperature for 1.5 hours.