

For Research Use Only

# RASEF Polyclonal antibody

Catalog Number: 28162-1-AP



## Basic Information

<b>Catalog Number:</b> 28162-1-AP	<b>GenBank Accession Number:</b> BC023566	<b>Purification Method:</b> Antigen affinity purification
<b>Size:</b> 150ul , Concentration: 900 ug/ml by Nanodrop and 400 ug/ml by Bradford method using BSA as the standard;	<b>GeneID (NCBI):</b> 158158	<b>Recommended Dilutions:</b> WB 1:1000-1:3000 IHC 1:200-1:800
<b>Source:</b> Rabbit	<b>UNIPROT ID:</b> Q8IZ41	
<b>Isotype:</b> IgG	<b>Full Name:</b> RAS and EF-hand domain containing	
<b>Immunogen Catalog Number:</b> AG28049	<b>Calculated MW:</b> 740 aa, 83 kDa	
	<b>Observed MW:</b> 90-100 kDa	

## Applications

<b>Tested Applications:</b> WB, IHC, ELISA	<b>Positive Controls:</b>
<b>Species Specificity:</b> human, rat	<b>WB :</b> LNCaP cells, PC-12 cells
<b>Note-IHC:</b> suggested antigen retrieval with <b>TE buffer pH 9.0; (*) Alternatively, antigen retrieval may be performed with citrate buffer pH 6.0</b>	<b>IHC :</b> human stomach tissue, human intrahepatic cholangiocarcinoma tissue

## Background Information

RASEF, or RAS and EF-hand domain-containing protein, is a member of the Rab GTPase protein family. RASEF is a protein with significant implications in lung cancer, potentially serving as both a prognostic biomarker and a therapeutic target. Its role in cancer cell growth and its interaction with ERK1/2 signaling make it a promising candidate for further research and development of new molecular therapies in lung cancer treatment.

## Storage

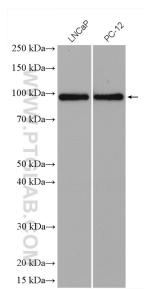
**Storage:**  
Store at -20°C. Stable for one year after shipment.  
**Storage Buffer:**  
PBS with 0.02% sodium azide and 50% glycerol pH 7.3.  
Aliquoting is unnecessary for -20°C storage

\*\*\* 20ul sizes contain 0.1% BSA

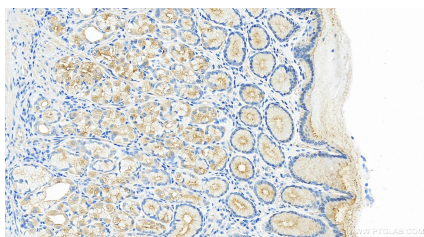
For technical support and original validation data for this product please contact:  
T: 1 (888) 4PTGLAB (1-888-478-4522) (toll free in USA), or 1(312) 455-8498 (outside USA)  
E: [proteintech@ptglab.com](mailto:proteintech@ptglab.com)  
W: [ptglab.com](http://ptglab.com)

This product is exclusively available under Proteintech Group brand and is not available to purchase from any other manufacturer.

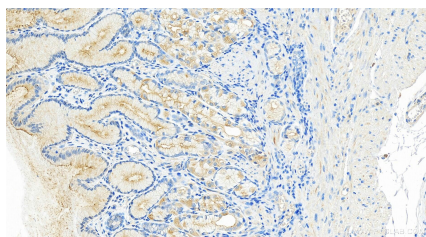
## Selected Validation Data



Various lysates were subjected to SDS PAGE followed by western blot with 28162-1-AP (RASEF antibody) at dilution of 1:2000 incubated at room temperature for 1.5 hours.



Immunohistochemical analysis of paraffin-embedded human stomach tissue slide using 28162-1-AP (RASEF antibody) at dilution of 1:400 (under 20x lens). Heat mediated antigen retrieval with Tris-EDTA buffer (pH 9.0).



Immunohistochemical analysis of paraffin-embedded human stomach tissue slide using 28162-1-AP (RASEF antibody) at dilution of 1:400 (under 20x lens). Heat mediated antigen retrieval with Tris-EDTA buffer (pH 9.0).