

For Research Use Only

NEU1 Polyclonal antibody

Catalog Number: 28167-1-AP



Basic Information

Catalog Number: 28167-1-AP	GenBank Accession Number: BC011900	Purification Method: Antigen affinity purification
Size: 150ul , Concentration: 500 ug/ml by Nanodrop;	GeneID (NCBI): 4758	Recommended Dilutions: WB: 1:2000-1:10000 IHC: 1:200-1:800
Source: Rabbit	UNIPROT ID: Q99519	
Isotype: IgG	Full Name: sialidase 1 (lysosomal sialidase)	
Immunogen Catalog Number: AG27945	Calculated MW: 45 kDa	
	Observed MW: 45 kDa	

Applications

Tested Applications: WB, IHC, ELISA	Positive Controls:
Species Specificity: human	WB : BxPC-3 cells, HepG2 cells, L02 cells IHC : human placenta tissue,

Note-IHC: suggested antigen retrieval with TE buffer pH 9.0; (*) Alternatively, antigen retrieval may be performed with citrate buffer pH 6.0

Background Information

NEU1 (lysosomal sialidase) encodes a kind of lysosomal enzyme that could cleave terminal sialic acids from glycoproteins or glycolipids to regulate various biological processes by conformational change (PMID:28130415). In the lysosome, NEU1 is one member of a heterotrimeric complex, the others are beta-galactosidase and cathepsin A. The NEU1 is widely expressed in mammalian tissues and involved in lysosomal storage disorder sialidosis, autoimmune diseases and the malignancy and metastasis of cancer cells (PMID:19075514). NUE1 also expresses on the plasma membrane where it modulates several signalling molecules about inflammation, exocytosis, phagocytosis, cell adhesion and proliferation (PMID:21928149). Additionally, it is reported that mutations in human NEU1 could lead to sialidosis (PMID:14517945).

Storage

Storage:
Store at -20°C. Stable for one year after shipment.
Storage Buffer:
PBS with 0.02% sodium azide and 50% glycerol, pH7.3
Aliquoting is unnecessary for -20°C storage

*** 20ul sizes contain 0.1% BSA

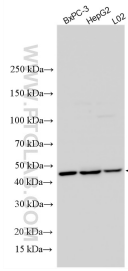
For technical support and original validation data for this product please contact:

T: 1 (888) 4PTGLAB (1-888-478-4522) (toll free in USA), or 1(312) 455-8498 (outside USA)

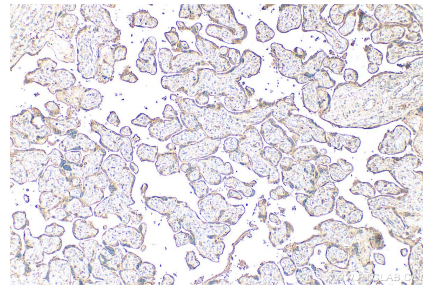
E: proteintech@ptglab.com
W: ptglab.com

This product is exclusively available under Proteintech Group brand and is not available to purchase from any other manufacturer.

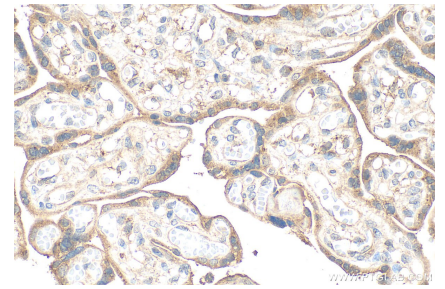
Selected Validation Data



Various lysates were subjected to SDS PAGE followed by western blot with 28167-1-AP (NEU1 antibody) at dilution of 1:5000 incubated at room temperature for 1.5 hours.



Immunohistochemical analysis of paraffin-embedded human placenta tissue slide using 28167-1-AP (NEU1 antibody) at dilution of 1:400 (under 10x lens). Heat mediated antigen retrieval with Tris-EDTA buffer (pH 9.0).



Immunohistochemical analysis of paraffin-embedded human placenta tissue slide using 28167-1-AP (NEU1 antibody) at dilution of 1:400 (under 40x lens). Heat mediated antigen retrieval with Tris-EDTA buffer (pH 9.0).