

For Research Use Only

SCARF1 Polyclonal antibody

Catalog Number: 28174-1-AP



Basic Information

Catalog Number: 28174-1-AP	GenBank Accession Number: BC039735	Purification Method: Antigen affinity purification
Size: 150ul , Concentration: 500 µg/ml by Nanodrop;	GeneID (NCBI): 8578	Recommended Dilutions: WB 1:500-1:2000
Source: Rabbit	Full Name: scavenger receptor class F, member 1	
Isotype: IgG	Calculated MW: 830 aa, 87 kDa	
Immunogen Catalog Number: AG28079	Observed MW: 90 kDa, 180 kDa	

Applications

Tested Applications: WB, ELISA	Positive Controls: WB : HepG2 cells, SMMC-7721 cells
Species Specificity: Human	

Background Information

Scavenger receptor class F member 1 (SCARF1), also known as scavenger receptor expressed by endothelial cells (SREC)-I, belongs to the scavenger receptor (SR) superfamily. SCARF1 has been shown to bind modified low density lipoproteins (LDLs), including acetylated (Ac-) and oxidized (ox-) LDLs (PMID: 29725698; PMID: 15145948). In addition to binding and internalizing a diverse range of endogenous proteins, SCARF1 also binds a wide array of viral, fungal, and bacterial antigens (PMID: 29242513). SCARF1 has a calculated molecular weight of 87 kDa, with a molecular weight of 140-160 kDa due to N-glycosylation (PMID: 22279061; PMID: 15145948). SCARF1 can also exist as a dimer (~ 180 kDa) and a truncated soluble form (~ 60 kDa) (PMID: 29242513; PMID: 29725698).

Storage

Storage:
Store at -20°C. Stable for one year after shipment.
Storage Buffer:
PBS with 0.02% sodium azide and 50% glycerol pH 7.3.
Aliquoting is unnecessary for -20°C storage

*** 20ul sizes contain 0.1% BSA

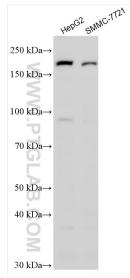
For technical support and original validation data for this product please contact:

T: 1 (888) 4PTGLAB (1-888-478-4522) (toll free in USA), or 1(312) 455-8498 (outside USA)

E: proteintech@ptglab.com
W: ptglab.com

This product is exclusively available under Proteintech Group brand and is not available to purchase from any other manufacturer.

Selected Validation Data



Various lysates were subjected to SDS PAGE followed by western blot with 28174-1-AP (SCARF1 antibody) at dilution of 1:1000 incubated at room temperature for 1.5 hours.