

For Research Use Only

NET1 Polyclonal antibody

Catalog Number: 28180-1-AP

Featured Product

7 Publications



Basic Information

Catalog Number:

28180-1-AP

Size:

150ul, Concentration: 900 ug/ml by Nanodrop and 467 ug/ml by Bradford method using BSA as the standard;

Source:

Rabbit

Isotype:

IgG

Immunogen Catalog Number:

AG28142

GenBank Accession Number:

BC010285

GeneID (NCBI):

10276

UNIPROT ID:

Q7Z628

Full Name:

neuroepithelial cell transforming 1

Calculated MW:

596 aa, 68 kDa

Observed MW:

68 kDa

Purification Method:

Antigen affinity purification

Recommended Dilutions:

WB 1:500-1:1000

IHC 1:50-1:500

IF-P 1:50-1:500

Applications

Tested Applications:

WB, IHC, IF-P, ELISA

Cited Applications:

WB, IHC, IF

Species Specificity:

human, mouse

Cited Species:

human, mouse

Note-IHC: suggested antigen retrieval with TE buffer pH 9.0; (*) Alternatively, antigen retrieval may be performed with citrate buffer pH 6.0

Positive Controls:

WB: Y79 cells, mouse brain tissue, Jurkat cells

IHC: human breast cancer tissue,

IF-P: mouse brain tissue,

Notable Publications

Author	Pubmed ID	Journal	Application
Yue Zheng	35845072	Front Cardiovasc Med	
Wei Zong	31451992	Gastric Cancer	WB
Jian Pang	39747410	Sci Rep	WB

Storage

Storage:

Store at -20°C. Stable for one year after shipment.

Storage Buffer:

PBS with 0.02% sodium azide and 50% glycerol pH 7.3.

Aliquoting is unnecessary for -20°C storage

*** 20ul sizes contain 0.1% BSA

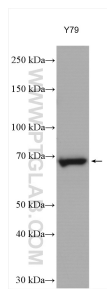
For technical support and original validation data for this product please contact:

T: 1 (888) 4PTGLAB (1-888-478-4522) (toll free in USA), or 1(312) 455-8498 (outside USA)

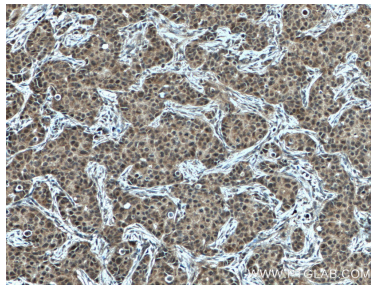
E: proteintech@ptglab.com
W: ptglab.com

This product is exclusively available under Proteintech Group brand and is not available to purchase from any other manufacturer.

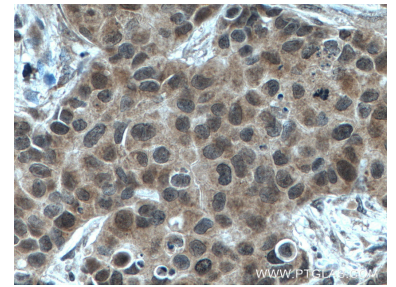
Selected Validation Data



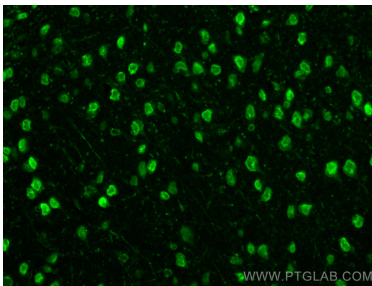
Y79 cells were subjected to SDS PAGE followed by western blot with 28180-1-AP (NET1 antibody) at dilution of 1:500 incubated at room temperature for 1.5 hours.



Immunohistochemical analysis of paraffin-embedded human breast cancer tissue slide using 28180-1-AP (NET1 antibody) at dilution of 1:200 (under 10x lens. Heat mediated antigen retrieval with Tris-EDTA buffer (pH 9.0).



Immunohistochemical analysis of paraffin-embedded human breast cancer tissue slide using 28180-1-AP (NET1 antibody) at dilution of 1:200 (under 40x lens. Heat mediated antigen retrieval with Tris-EDTA buffer (pH 9.0).



Immunofluorescent analysis of (4% PFA) fixed paraffin-embedded mouse brain tissue using NET1 antibody (28180-1-AP) at dilution of 1:200 and CoraLite®488-Conjugated AffiniPure Goat Anti-Rabbit IgG(H+L) (SA00013-2). Heat mediated antigen retrieval with Tris-EDTA buffer (pH 9.0).