

For Research Use Only

# PMS1 Polyclonal antibody

Catalog Number: 28186-1-AP



## Basic Information

<b>Catalog Number:</b> 28186-1-AP	<b>GenBank Accession Number:</b> BC096331	<b>Purification Method:</b> Antigen affinity purification
<b>Size:</b> 150ul , Concentration: 800 µg/ml by Nanodrop;	<b>GeneID (NCBI):</b> 5378	<b>Recommended Dilutions:</b> WB 1:1000-1:6000 IF 1:50-1:500
<b>Source:</b> Rabbit	<b>Full Name:</b> PMS1 postmeiotic segregation increased 1 (S. cerevisiae)	
<b>Isotype:</b> IgG	<b>Observed MW:</b> 106 kDa	
<b>Immunogen Catalog Number:</b> AG28132		

## Applications

<b>Tested Applications:</b> IF, WB, ELISA	<b>Positive Controls:</b>
<b>Species Specificity:</b> Human	<b>WB :</b> Jurkat cells, HeLa cells, HepG2 cells, MOLT-4 cells, K-562 cells
	<b>IF :</b> Caco-2 cells,

## Background Information

PMS1 Homolog 1 is a member of the DNA mismatch repair enzymes (MMREs) which is to eliminate the mismatch of insertions and deletions as a consequence of DNA polymerase errors at DNA synthesis in eukaryotes. PMS1 and MLH1 could form a heterodimer MutLβ that belongs to MMREs (PMID:25619773). In the MMR system, the MutS complex recognizes the DNA mispairs firstly, and then the Mlh1-Pms1 and other associated proteins such as PCNA, RFC, Exo1 were recruited, inducing Exonuclease 1 (Exo1)-dependent and -independent MMR pathways (PMID:24981171). Mutations in this gene cause hereditary nonpolyposis colorectal cancer (HNPCC), which is also known as Lynch syndrome. It was reported that PMS1 is a widely expressed protein and located in the nucleus. Alternative splicing allows for 4 isoforms of PMS1 protein.

## Storage

**Storage:**  
Store at -20°C. Stable for one year after shipment.  
**Storage Buffer:**  
PBS with 0.02% sodium azide and 50% glycerol pH 7.3.  
Aliquoting is unnecessary for -20°C storage

\*\*\* 20ul sizes contain 0.1% BSA

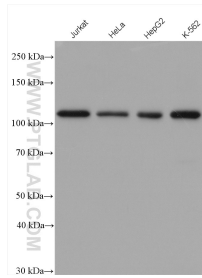
For technical support and original validation data for this product please contact:

T: 1 (888) 4PTGLAB (1-888-478-4522) (toll free in USA), or 1(312) 455-8498 (outside USA)

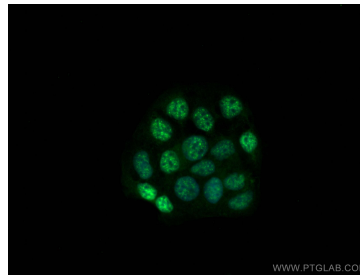
E: proteintech@ptglab.com  
W: ptglab.com

This product is exclusively available under Proteintech Group brand and is not available to purchase from any other manufacturer.

## Selected Validation Data



Various lysates were subjected to SDS PAGE followed by western blot with 28186-1-AP (PMS1 antibody) at dilution of 1:3000 incubated at room temperature for 1.5 hours.



Immunofluorescent analysis of (4% PFA) fixed Caco-2 cells using PMS1 antibody (28186-1-AP) at dilution of 1:200 and CoraLite®488-Conjugated AffiniPure Goat Anti-Rabbit IgG(H+L).