

For Research Use Only

ETV1 Polyclonal antibody

Catalog Number:28197-1-AP



Basic Information

Catalog Number: 28197-1-AP	GenBank Accession Number: BC098403	Purification Method: Antigen affinity purification
Size: 150ul , Concentration: 380 ug/ml by Nanodrop;	GeneID (NCBI): 2115	Recommended Dilutions: WB: 1:500-1:1000
Source: Rabbit	UNIPROT ID: P50549	
Isotype: IgG	Full Name: ets variant 1	
Immunogen Catalog Number: AG28158	Observed MW: 55-60 kDa	

Applications

Tested Applications: WB, ELISA	Positive Controls: WB : NIH/3T3 cells,
Species Specificity: human, mouse	

Background Information

ETV1(Ets variant 1) is a member of ETS transcription factor family, which has become the research focus in cancer and cardiac electrophysiology in recent years. TMPRSS2-ETV1 gene fusion exists in about 1-2% of prostate cancer, while ETV1 is highly expressed in 5-10% of advanced tumors. Different from sibling factor ERG, ETV1 not only enhances the signal of androgen receptor (AR), but also can autonomously activate testosterone synthesis and cholesterol/lipid metabolism reprogramming, cooperate with PTEN deficiency to promote the progress of local cancer to invasive adenocarcinoma, and predict higher Gleason score and poor prognosis, so it is regarded as an invasive subtype marker of "metabolism-transcription dual drive".

Storage

Storage:
Store at -20°C. Stable for one year after shipment.
Storage Buffer:
PBS with 0.02% sodium azide and 50% glycerol, pH7.3
Aliquoting is unnecessary for -20°C storage

*** 20ul sizes contain 0.1% BSA

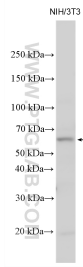
For technical support and original validation data for this product please contact:

T: 1 (888) 4PTGLAB (1-888-478-4522) (toll free in USA), or 1(312) 455-8498 (outside USA)

E: proteintech@ptglab.com
W: ptglab.com

This product is exclusively available under Proteintech Group brand and is not available to purchase from any other manufacturer.

Selected Validation Data



Various lysates were subjected to SDS PAGE followed by western blot with 28197-1-AP (ETV1 antibody) at dilution of 1:800 incubated at room temperature for 1.5 hours.