

For Research Use Only

SREBF2 Polyclonal antibody

Catalog Number: 28212-1-AP

Featured Product

67 Publications



Basic Information

Catalog Number:

28212-1-AP

Size:

150ul, Concentration: 900 ug/ml by Nanodrop;

Source:

Rabbit

Isotype:

IgG

Immunogen Catalog Number:

AG28205

GenBank Accession Number:

BC056158

GeneID (NCBI):

6721

UNIPROT ID:

Q12772

Full Name:

sterol regulatory element binding transcription factor 2

Calculated MW:

124 kDa

Observed MW:

73-75 kDa, 120-130 kDa

Purification Method:

Antigen affinity purification

Recommended Dilutions:

WB: 1:1000-1:8000

Applications

Tested Applications:

WB, ELISA

Cited Applications:

WB

Species Specificity:

human

Cited Species:

human, mouse, pig, hamster, sheep

Positive Controls:

WB: HUVEC cells, HeLa cells, HepG2 cells

Background Information

SREBF2, also named as BHLHD2, is a 1141 amino acid protein, which contains 1 bHLH domain and belongs to the SREBP family. SREBF2 localizes in the endoplasmic reticulum membrane and is ubiquitously expressed in adult and fetal tissues. SREBF2 as a transcriptional activator is required for lipid homeostasis. SREBF2 expression is dynamically regulated in response to nutritional and hormonal cues. SREBF2 exists two isoform with molecular weight 124 kDa and 73 kDa.

Notable Publications

Author	Pubmed ID	Journal	Application
Shaofan Hu	36174386	Redox Biol	WB
Mingyue Tao	34518524	Cell Death Dis	WB
Hui-Yu Luo	36286043	Curr Issues Mol Biol	WB

Storage

Storage:

Store at -20°C. Stable for one year after shipment.

Storage Buffer:

PBS with 0.02% sodium azide and 50% glycerol, pH7.3

Aliquoting is unnecessary for -20°C storage

*** 20ul sizes contain 0.1% BSA

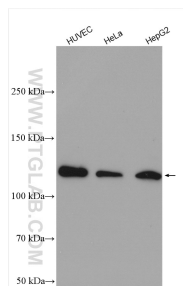
For technical support and original validation data for this product please contact:

T: 1 (888) 4PTGLAB (1-888-478-4522) (toll free in USA), or 1(312) 455-8498 (outside USA)

E: proteintech@ptglab.com
W: ptglab.com

This product is exclusively available under Proteintech Group brand and is not available to purchase from any other manufacturer.

Selected Validation Data



Various lysates were subjected to SDS PAGE followed by western blot with 28212-1-AP (SREBF2 antibody) at dilution of 1:4000 incubated at room temperature for 1.5 hours.