

For Research Use Only

RAI2 Polyclonal antibody

Catalog Number: 28217-1-AP



Basic Information

Catalog Number:

28217-1-AP

Size:

150ul, Concentration: 350 ug/ml by Nanodrop;

Source:

Rabbit

Isotype:

IgG

Immunogen Catalog Number:

AG28253

GenBank Accession Number:

BC027937

GeneID (NCBI):

10742

UNIPROT ID:

Q9Y5P3

Full Name:

retinoic acid induced 2

Calculated MW:

57 kDa

Observed MW:

70 kDa

Purification Method:

Antigen affinity purification

Recommended Dilutions:

WB 1:500-1:2000

IF/ICC 1:50-1:500

Applications

Tested Applications:

WB, IF/ICC, ELISA

Species Specificity:

human

Positive Controls:

WB : MCF-7 cells, IMR-32 cells, SK-N-SH cells, TT cells

IF/ICC : SW480 cells,

Background Information

Retinoic acid-induced 2 (RAI2) was initially described as a retinoic acid-inducible gene, which has been assumed to be involved in development. RAI2 was initially related to cell differentiation and induced by retinoic acid and has been identified as an emerging tumor suppressor in breast cancer and colorectal cancer. RAI2 is frequently methylated in human CRC, and the expression of RAI2 is regulated by promoter region methylation (PMID: 29796120).

Storage

Storage:

Store at -20°C. Stable for one year after shipment.

Storage Buffer:

PBS with 0.02% sodium azide and 50% glycerol pH 7.3.

Aliquoting is unnecessary for -20°C storage

*** 20ul sizes contain 0.1% BSA

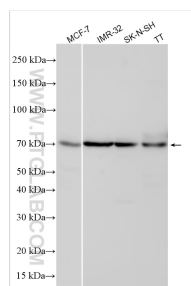
For technical support and original validation data for this product please contact:

T: 1 (888) 4PTGLAB (1-888-478-4522) (toll free in USA), or 1(312) 455-8498 (outside USA)

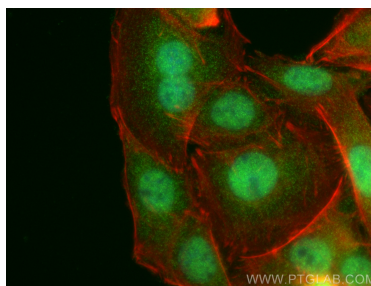
E: proteintech@ptglab.com
W: ptglab.com

This product is exclusively available under Proteintech Group brand and is not available to purchase from any other manufacturer.

Selected Validation Data



Various lysates were subjected to SDS PAGE followed by western blot with 28217-1-AP (RAI2 antibody) at dilution of 1:1000 incubated at room temperature for 1.5 hours.



Immunofluorescent analysis of (4% PFA) fixed SW480 cells using RAI2 antibody (28217-1-AP) at dilution of 1:200 and CoraLite®488-Conjugated Goat Anti-Rabbit IgG(H+L) (SA00013-2), CL594-phalloidin (red).