

For Research Use Only

# FSTL3/FLRG Polyclonal antibody, PBS Only

Catalog Number: 28218-1-PBS

Featured Product



## Basic Information

**Catalog Number:**

28218-1-PBS

**Size:**

100ug, Concentration: 1 mg/ml by Nanodrop;

**Source:**

Rabbit

**Isotype:**

IgG

**Immunogen Catalog Number:**

AG27626

**GenBank Accession Number:**

BC005839

**GeneID (NCBI):**

10272

**UNIPROT ID:**

O95633

**Full Name:**

follicle-stimulating-like 3 (secreted glycoprotein)

**Calculated MW:**

263 aa, 28 kDa

**Observed MW:**

28-33 kDa

**Purification Method:**

Antigen affinity purification

## Applications

**Tested Applications:**

WB, IHC, Indirect ELISA

**Species Specificity:**

human, rat

## Background Information

Follistatin-like 3 (FSTL3) is a highly conserved 27-39 kDa monomeric glycoprotein belonging to the follistatin protein family and it is primarily expressed in the placenta as well as in the testis, heart, adipose tissue, and pancreas. It is an extracellular inhibitor of the transforming growth factor beta (TGF- $\beta$ ) family ligands, including activin, myostatin, and bone morphogenetic proteins.

## Storage

**Storage:**

Store at -80°C.

**Storage Buffer:**

PBS Only

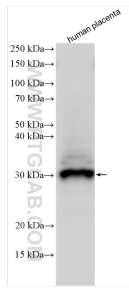
For technical support and original validation data for this product please contact:

T: 1 (888) 4PTGLAB (1-888-478-4522) (toll free in USA), or 1(312) 455-8498 (outside USA)

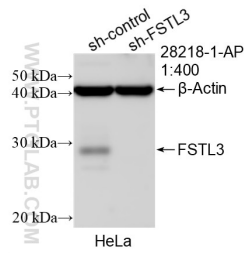
E: [proteintech@ptglab.com](mailto:proteintech@ptglab.com)  
W: [ptglab.com](http://ptglab.com)

This product is exclusively available under Proteintech Group brand and is not available to purchase from any other manufacturer.

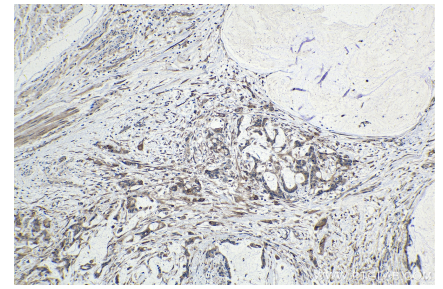
## Selected Validation Data



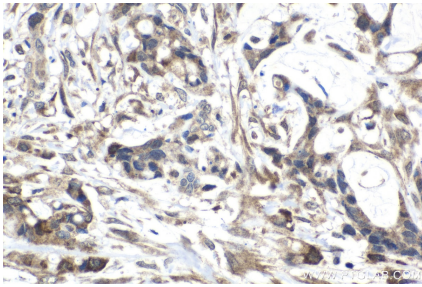
Human placenta tissues were subjected to SDS PAGE followed by western blot with 28218-1-AP (FSTL3 antibody) at dilution of 1:800 incubated at room temperature for 1.5 hours. This data was developed using the same antibody clone with 28218-1-PBS in a different storage buffer formulation.



WB result of FSTL3 antibody (28218-1-AP; 1:400; incubated at room temperature for 1.5 hours) with sh-Control and sh-FSTL3 transfected HeLa cells. This data was developed using the same antibody clone with 28218-1-PBS in a different storage buffer formulation.



Immunohistochemical analysis of paraffin-embedded human urothelial carcinoma tissue slide using 28218-1-AP (FSTL3 antibody) at dilution of 1:500 (under 10x lens). Heat mediated antigen retrieval with Tris-EDTA buffer (pH 9.0). This data was developed using the same antibody clone with 28218-1-PBS in a different storage buffer formulation.



Immunohistochemical analysis of paraffin-embedded human urothelial carcinoma tissue slide using 28218-1-AP (FSTL3 antibody) at dilution of 1:500 (under 40x lens). Heat mediated antigen retrieval with Tris-EDTA buffer (pH 9.0). This data was developed using the same antibody clone with 28218-1-PBS in a different storage buffer formulation.