

For Research Use Only

CREG2 Polyclonal antibody

Catalog Number: 28236-1-AP



Basic Information

Catalog Number: 28236-1-AP	GenBank Accession Number: BC032949	Purification Method: Antigen affinity purification
Size: 150ul , Concentration: 360 ug/ml by Nanodrop;	GeneID (NCBI): 200407	Recommended Dilutions: IHC: 1:50-1:500 IF/ICC: 1:200-1:800
Source: Rabbit	UNIPROT ID: Q8IUH2	
Isotype: IgG	Full Name: cellular repressor of E1A-stimulated genes 2	
Immunogen Catalog Number: AG28242	Calculated MW: 32 kDa	

Applications

Tested Applications: IHC, IF/ICC, ELISA	Positive Controls: IHC : mouse brain tissue, IF/ICC : NIH/3T3 cells,
Species Specificity: human, mouse	

Note-IHC: suggested antigen retrieval with TE buffer pH 9.0; (*) Alternatively, antigen retrieval may be performed with citrate buffer pH 6.0

Background Information

The cellular repressor of E1A-stimulated genes (CREG) is a secreted glycoprotein that promotes the differentiation of pluripotent stem cells. CREG2 is a promising biological indicator because it plays an important role in increasing the migratory and proliferative capacity of lung adenocarcinoma (LUAD) cells (PMID: 40676398).

Storage

Storage:
Store at -20°C. Stable for one year after shipment.
Storage Buffer:
PBS with 0.02% sodium azide and 50% glycerol, pH7.3
Aliquoting is unnecessary for -20°C storage

*** 20ul sizes contain 0.1% BSA

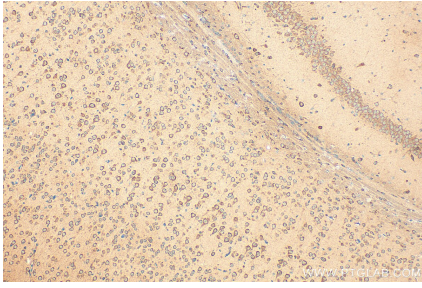
For technical support and original validation data for this product please contact:

T: 1 (888) 4PTGLAB (1-888-478-4522) (toll free in USA), or 1(312) 455-8498 (outside USA)

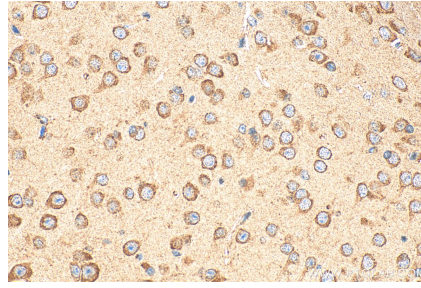
E: proteintech@ptglab.com
W: ptglab.com

This product is exclusively available under Proteintech Group brand and is not available to purchase from any other manufacturer.

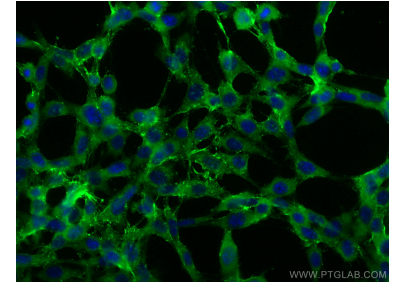
Selected Validation Data



Immunohistochemical analysis of paraffin-embedded mouse brain tissue slide using 28236-1-AP (CREG2 antibody) at dilution of 1:200 (under 10x lens). Heat mediated antigen retrieval with Tris-EDTA buffer (pH 9.0).



Immunohistochemical analysis of paraffin-embedded mouse brain tissue slide using 28236-1-AP (CREG2 antibody) at dilution of 1:200 (under 40x lens). Heat mediated antigen retrieval with Tris-EDTA buffer (pH 9.0).



Immunofluorescent analysis of (-20°C Ethanol) fixed NIH/3T3 cells using CREG2 antibody (28236-1-AP) at dilution of 1:400 and CoraLite@488-Conjugated AffiniPure Goat Anti-Rabbit IgG(H+L).