

For Research Use Only

CREG2 Polyclonal antibody, PBS Only

Catalog Number: 28236-1-PBS



Basic Information

Catalog Number: 28236-1-PBS	GenBank Accession Number: BC032949	Purification Method: Antigen affinity purification
Size: 100ug, Concentration: 1 mg/ml by Nanodrop;	GeneID (NCBI): 200407	
Source: Rabbit	UNIPROT ID: Q8IUH2	
Isotype: IgG	Full Name: cellular repressor of E1A-stimulated genes 2	
Immunogen Catalog Number: AG28242	Calculated MW: 32 kDa	

Applications

Tested Applications:
IHC, IF/ICC, Indirect ELISA

Species Specificity:
human, mouse

Background Information

The cellular repressor of E1A-stimulated genes (CREG) is a secreted glycoprotein that promotes the differentiation of pluripotent stem cells. CREG2 is a promising biological indicator because it plays an important role in increasing the migratory and proliferative capacity of lung adenocarcinoma (LUAD) cells (PMID: 40676398).

Storage

Storage:
Store at -80°C.

Storage Buffer:
PBS only, pH7.3

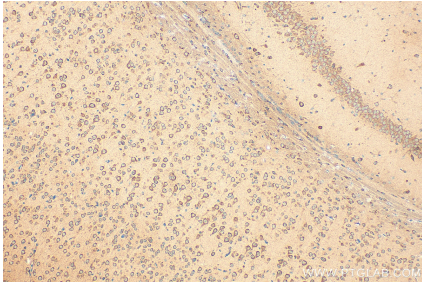
For technical support and original validation data for this product please contact:

T: 1 (888) 4PTGLAB (1-888-478-4522) (toll free
in USA), or 1(312) 455-8498 (outside USA)

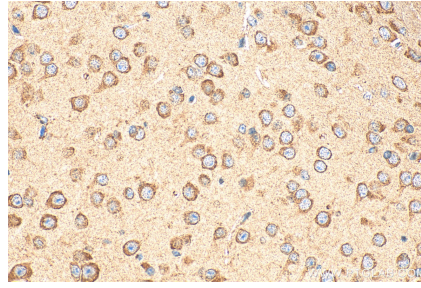
E: proteintech@ptglab.com
W: ptglab.com

This product is exclusively available under Proteintech Group brand and is not available to purchase from any other manufacturer.

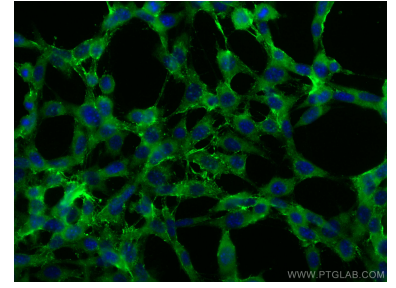
Selected Validation Data



Immunohistochemical analysis of paraffin-embedded mouse brain tissue slide using 28236-1-AP (CREG2 antibody) at dilution of 1:200 (under 10x lens). Heat mediated antigen retrieval with Tris-EDTA buffer (pH 9.0). This data was developed using the same antibody clone with 28236-1-PBS in a different storage buffer formulation.



Immunohistochemical analysis of paraffin-embedded mouse brain tissue slide using 28236-1-AP (CREG2 antibody) at dilution of 1:200 (under 40x lens). Heat mediated antigen retrieval with Tris-EDTA buffer (pH 9.0). This data was developed using the same antibody clone with 28236-1-PBS in a different storage buffer formulation.



Immunofluorescent analysis of (-20°C Ethanol) fixed NIH/3T3 cells using CREG2 antibody (28236-1-AP) at dilution of 1:400 and CoraLite@488-Conjugated AffiniPure Goat Anti-Rabbit IgG(H+L). This data was developed using the same antibody clone with 28236-1-PBS in a different storage buffer formulation.