

For Research Use Only

GLI2 Polyclonal antibody

Catalog Number: 28245-1-AP

1 Publications



Basic Information

Catalog Number: 28245-1-AP	GenBank Accession Number: NM_005270	Purification Method: Antigen affinity purification
Size: 150ul , Concentration: 400 ug/ml by Nanodrop;	GeneID (NCBI): 2736	Recommended Dilutions: WB 1:1000-1:4000 IHC 1:50-1:500
Source: Rabbit	UNIPROT ID: P10070	
Isotype: IgG	Full Name: GLI family zinc finger 2	
Immunogen Catalog Number: AG28422	Calculated MW: 168 aa	
	Observed MW: 180-200 kDa	

Applications

Tested Applications: WB, IHC, ELISA	Positive Controls: WB : A549 cells, U2OS cells IHC : human breast cancer tissue,
Cited Applications: WB	
Species Specificity: human	
Cited Species: mouse	
Note-IHC: suggested antigen retrieval with TE buffer pH 9.0; (*) Alternatively, antigen retrieval may be performed with citrate buffer pH 6.0	

Background Information

GLI2, along with the related GLI1 and GLI3, is a member of the GLI family of transcription factors belonging to the Glis superfamily. Glioma-Associated Oncogene Family Zinc Finger 2 (GLI2) is a zinc-finger transcription factor involved in the Sonic Hedgehog pathway. GLI2 is involved in proliferation, invasion, fibrosis, and is involved in carcinogenesis in various malignancies including gastric cancer, lung cancer, prostate cancer, bladder cancer, and so on.

Notable Publications

Author	Pubmed ID	Journal	Application
Xuan Yu	39531503	Proc Natl Acad Sci U S A	WB

Storage

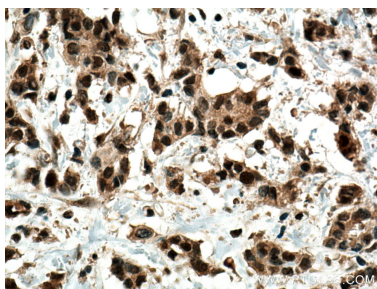
Storage:
Store at -20°C. Stable for one year after shipment.
Storage Buffer:
PBS with 0.02% sodium azide and 50% glycerol pH 7.3.
Aliquoting is unnecessary for -20°C storage

*** 20ul sizes contain 0.1% BSA

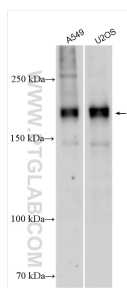
For technical support and original validation data for this product please contact:
T: 1 (888) 4PTGLAB (1-888-478-4522) (toll free in USA), or 1(312) 455-8498 (outside USA)
E: proteintech@ptglab.com
W: ptglab.com

This product is exclusively available under Proteintech Group brand and is not available to purchase from any other manufacturer.

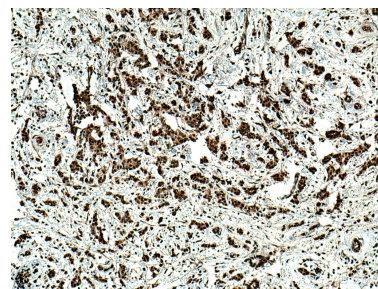
Selected Validation Data



Immunohistochemical analysis of paraffin-embedded human breast cancer tissue slide using 28245-1-AP (GLI2 antibody) at dilution of 1:200 (under 40x lens). Heat mediated antigen retrieval with Tris-EDTA buffer (pH 9.0).



Various lysates were subjected to SDS PAGE followed by western blot with 28245-1-AP (GLI2 antibody) at dilution of 1:2000 incubated at room temperature for 1.5 hours.



Immunohistochemical analysis of paraffin-embedded human breast cancer tissue slide using 28245-1-AP (GLI2 antibody) at dilution of 1:200 (under 10x lens). Heat mediated antigen retrieval with Tris-EDTA buffer (pH 9.0).