

For Research Use Only

TMEM192 Polyclonal antibody

Catalog Number: 28263-1-AP **1 Publications**



Basic Information

Catalog Number: 28263-1-AP	GenBank Accession Number: BC036301	Purification Method: Antigen affinity purification
Size: 150ul , Concentration: 700 µg/ml by Nanodrop and 367 µg/ml by Bradford method using BSA as the standard;	GeneID (NCBI): 201931	Recommended Dilutions: WB 1:1000-1:4000 IHC 1:50-1:500
Source: Rabbit	Full Name: transmembrane protein 192	
Isotype: IgG	Observed MW: 30 kDa	
Immunogen Catalog Number: AG27576		

Applications

Tested Applications: IHC, WB, ELISA	Positive Controls: WB : HeLa cells, U2OS cells
Cited Applications: IHC	IHC : human breast cancer tissue, human liver cancer tissue, human lung cancer tissue, human prostate cancer tissue, mouse cerebellum tissue
Species Specificity: Human, mouse	
Cited Species: human	
Note-IHC: suggested antigen retrieval with TE buffer pH 9.0; (*) Alternatively, antigen retrieval may be performed with citrate buffer pH 6.0	

Background Information

Transmembrane protein 192 (TMEM192) has been previously identified in proteomic analyses of lysosomal membranes. TMEM192 shows a wide expression pattern in mouse tissues. Interestingly, TMEM192 was found to be highly expressed in tumor cell lines, while it was not expressed or detected at low levels in normal cell lines (PMID: 22736246). TMEM192 can be detected as 30 kDa.

Notable Publications

Author	Pubmed ID	Journal	Application
Yang Wang	37211762	Mol Ther	IHC

Storage

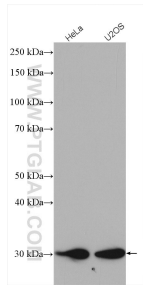
Storage:
Store at -20°C. Stable for one year after shipment.
Storage Buffer:
PBS with 0.02% sodium azide and 50% glycerol pH 7.3.
Aliquoting is unnecessary for -20°C storage

*** 20ul sizes contain 0.1% BSA

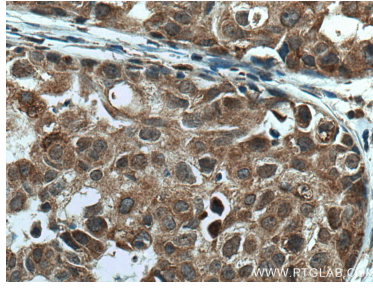
For technical support and original validation data for this product please contact:
T: 1 (888) 4PTGLAB (1-888-478-4522) (toll free in USA), or 1(312) 455-8498 (outside USA)
E: proteintech@ptglab.com
W: ptglab.com

This product is exclusively available under Proteintech Group brand and is not available to purchase from any other manufacturer.

Selected Validation Data



Various lysates were subjected to SDS PAGE followed by western blot with 28263-1-AP (TMEM192 antibody) at dilution of 1:2000 incubated at room temperature for 1.5 hours.



Immunohistochemical analysis of paraffin-embedded human breast cancer tissue slide using 28263-1-AP (TMEM192 antibody) at dilution of 1:200 (under 40x lens). Heat mediated antigen retrieval with Tris-EDTA buffer (pH 9.0).