

For Research Use Only

CTC1 Polyclonal antibody

Catalog Number: 28268-1-AP

Featured Product



Basic Information

Catalog Number:

28268-1-AP

Size:

150ul, Concentration: 450 ug/ml by Nanodrop and 267 ug/ml by Bradford method using BSA as the standard;

Source:

Rabbit

Isotype:

IgG

Immunogen Catalog Number:

AG28167

GenBank Accession Number:

BC111783

GeneID (NCBI):

80169

UNIPROT ID:

Q2NKG3

Full Name:

chromosome 17 open reading frame 68

Calculated MW:

1217 aa, 135 kDa

Observed MW:

135-150 kDa

Purification Method:

Antigen affinity purification

Recommended Dilutions:

WB 1:500-1:3000

IF-P 1:50-1:500

Applications

Tested Applications:

WB, IF-P, ELISA

Species Specificity:

human

Positive Controls:

WB: A549 cells, HeLa cells, K562 cells

IF-P: mouse brain tissue,

Background Information

Conserved telomere maintenance component 1 (CTC1) is a subunit of an alpha accessory factor (AAF) that stimulates the activity of DNA polymerase-alpha-primase, the enzyme that initiates DNA replication (PMID: 19119139). CTC1 also functions in a telomere-associated complex with STN1 and TEN1 (PMID: 19854130).

Storage

Storage:

Store at -20°C. Stable for one year after shipment.

Storage Buffer:

PBS with 0.02% sodium azide and 50% glycerol, pH7.3

Aliquoting is unnecessary for -20°C storage

*** 20ul sizes contain 0.1% BSA

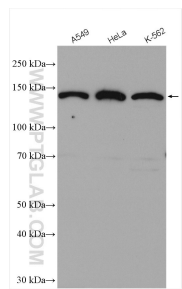
For technical support and original validation data for this product please contact:

T: 1 (888) 4PTGLAB (1-888-478-4522) (toll free in USA), or 1(312) 455-8498 (outside USA)

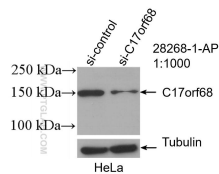
E: proteintech@ptglab.com
W: ptglab.com

This product is exclusively available under Proteintech Group brand and is not available to purchase from any other manufacturer.

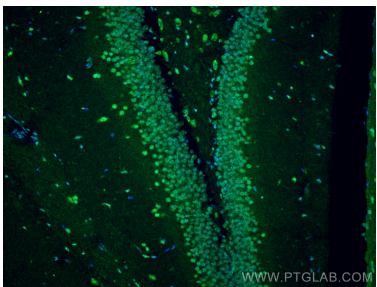
Selected Validation Data



Various lysates were subjected to SDS PAGE followed by western blot with 28268-1-AP (C17orf68 antibody) at dilution of 1:1500 incubated at room temperature for 1.5 hours.



WB result of C17orf68 antibody (28268-1-AP; 1:1000; incubated at room temperature for 1.5 hours) with sh-Control and sh-C17orf68 transfected HeLa cells.



Immunofluorescent analysis of (4% PFA) fixed paraffin-embedded mouse brain tissue using CTC1 antibody (28268-1-AP) at dilution of 1:200 and CoraLite®488-Conjugated Goat Anti-Rabbit IgG(H+L) (SA00013-2). Heat mediated antigen retrieval with Tris-EDTA buffer (pH 9.0).