

For Research Use Only

# CTC1 Polyclonal antibody, PBS Only

Catalog Number: 28268-1-PBS

Featured Product



## Basic Information

**Catalog Number:**

28268-1-PBS

**Size:**

100ug, Concentration: 1 mg/ml by Nanodrop;

**Source:**

Rabbit

**Isotype:**

IgG

**Immunogen Catalog Number:**

AG28167

**GenBank Accession Number:**

BC111783

**GeneID (NCBI):**

80169

**UNIPROT ID:**

Q2NKJ3

**Full Name:**

chromosome 17 open reading frame 68

**Calculated MW:**

1217 aa, 135 kDa

**Observed MW:**

135-150 kDa

**Purification Method:**

Antigen affinity purification

## Applications

**Tested Applications:**

WB, IF-P, Indirect ELISA

**Species Specificity:**

human

## Background Information

Conserved telomere maintenance component 1 (CTC1) is a subunit of an alpha accessory factor (AAF) that stimulates the activity of DNA polymerase-alpha-primase, the enzyme that initiates DNA replication (PMID: 19119139). CTC1 also functions in a telomere-associated complex with STN1 and TEN1 (PMID: 19854130).

## Storage

**Storage:**

Store at -80°C.

**Storage Buffer:**

PBS only, pH7.3

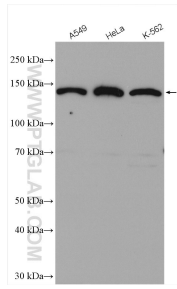
For technical support and original validation data for this product please contact:

T: 1 (888) 4PTGLAB (1-888-478-4522) (toll free in USA), or 1(312) 455-8498 (outside USA)

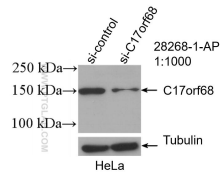
E: [proteintech@ptglab.com](mailto:proteintech@ptglab.com)  
W: [ptglab.com](http://ptglab.com)

This product is exclusively available under Proteintech Group brand and is not available to purchase from any other manufacturer.

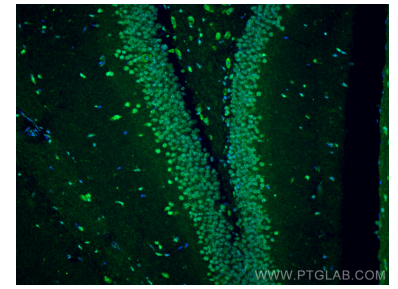
## Selected Validation Data



Various lysates were subjected to SDS PAGE followed by western blot with 28268-1-AP (C17orf68 antibody) at dilution of 1:1500 incubated at room temperature for 1.5 hours. This data was developed using the same antibody clone with 28268-1-PBS in a different storage buffer formulation.



WB result of C17orf68 antibody (28268-1-AP; 1:1000; incubated at room temperature for 1.5 hours) with sh-Control and sh-C17orf68 transfected HeLa cells. This data was developed using the same antibody clone with 28268-1-PBS in a different storage buffer formulation.



Immunofluorescent analysis of (4% PFA) fixed paraffin-embedded mouse brain tissue using CTC1 antibody (28268-1-AP) at dilution of 1:200 and CoraLite®488-Conjugated Goat Anti-Rabbit IgG(H+L) (SA00013-2). Heat mediated antigen retrieval with Tris-EDTA buffer (pH 9.0). This data was developed using the same antibody clone with 28268-1-PBS in a different storage buffer formulation.