

For Research Use Only

Calmodulin 1/2/3 Polyclonal antibody



Catalog Number: 28270-1-AP

Basic Information

Catalog Number: 28270-1-AP	GenBank Accession Number: BC006464	Purification Method: Antigen affinity purification
Size: 150ul , Concentration: 1200 µg/ml by Nanodrop;	GeneID (NCBI): 805	Recommended Dilutions: WB 1:500-1:2000 IHC 1:50-1:500 IF 1:50-1:500
Source: Rabbit	Full Name: calmodulin 2 (phosphorylase kinase, delta)	
Isotype: IgG	Calculated MW: 17 kDa	
Immunogen Catalog Number: AG28000	Observed MW: 17-22 kDa	

Applications

Tested Applications:

IF, IHC, WB, ELISA

Species Specificity:

Human, mouse, rat

Note-IHC: suggested antigen retrieval with TE buffer pH 9.0; (*) Alternatively, antigen retrieval may be performed with citrate buffer pH 6.0

Positive Controls:

WB: mouse skeletal muscle tissue, rat skeletal muscle tissue

IHC: rat brain tissue, mouse brain tissue, mouse skeletal muscle tissue

IF: HeLa cells,

Background Information

Calmodulin is the most widely distributed and most versatile member of a family of calcium-binding proteins which probably serve as receptors for the Ca²⁺ signal. Through the regulation of a wide variety of intracellular enzymes, calmodulin plays a key role in many physiological processes (PMID: 6313166).

Storage

Storage:

Store at -20°C. Stable for one year after shipment.

Storage Buffer:

PBS with 0.02% sodium azide and 50% glycerol pH 7.3.

Aliquoting is unnecessary for -20°C storage

*** 20ul sizes contain 0.1% BSA

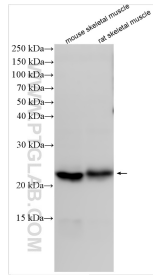
For technical support and original validation data for this product please contact:

T: 1 (888) 4PTGLAB (1-888-478-4522) (toll free in USA), or 1(312) 455-8498 (outside USA)

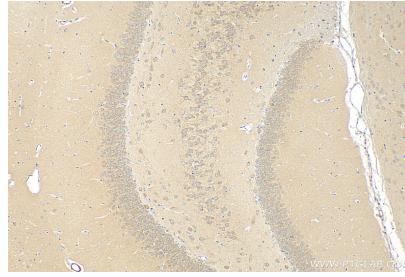
E: proteintech@ptglab.com
W: ptglab.com

This product is exclusively available under Proteintech Group brand and is not available to purchase from any other manufacturer.

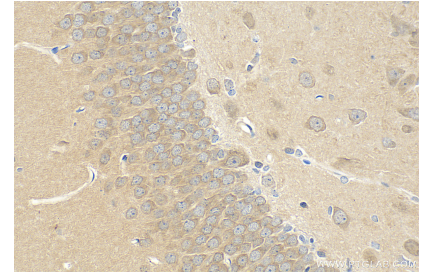
Selected Validation Data



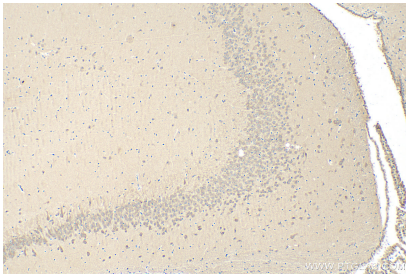
Various lysates were subjected to SDS PAGE followed by western blot with 28270-1-AP (Calmodulin 1/2/3 antibody) at dilution of 1:1000 incubated at room temperature for 1.5 hours.



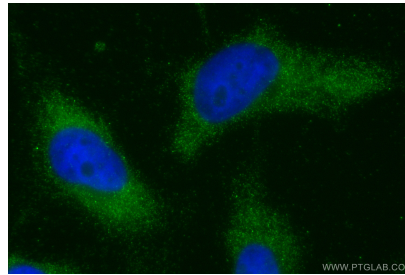
Immunohistochemical analysis of paraffin-embedded rat brain tissue slide using 28270-1-AP (Calmodulin 1/2/3 antibody) at dilution of 1:200 (under 10x lens). Heat mediated antigen retrieval with Tris-EDTA buffer (pH 9.0).



Immunohistochemical analysis of paraffin-embedded rat brain tissue slide using 28270-1-AP (Calmodulin 1/2/3 antibody) at dilution of 1:200 (under 40x lens). Heat mediated antigen retrieval with Tris-EDTA buffer (pH 9.0).



Immunohistochemical analysis of paraffin-embedded mouse brain tissue slide using 28270-1-AP (Calmodulin 1/2/3 antibody) at dilution of 1:200 (under 10x lens). Heat mediated antigen retrieval with Tris-EDTA buffer (pH 9.0).



Immunofluorescent analysis of (-20°C Ethanol) fixed HeLa cells using Calmodulin 1/2/3 antibody (28270-1-AP) at dilution of 1:200 and CoraLite® 488-Conjugated AffiniPure Goat Anti-Rabbit IgG(H+L).