

For Research Use Only

Calmodulin 1/2/3 Polyclonal antibody, PBS Only

Catalog Number: 28270-1-PBS



Basic Information

Catalog Number: 28270-1-PBS	GenBank Accession Number: BC006464	Purification Method: Antigen affinity purification
Size: 100ug , Concentration: 1 mg/ml by Nanodrop;	GeneID (NCBI): 805	
Source: Rabbit	UNIPROT ID: P62158	
Isotype: IgG	Full Name: calmodulin 2 (phosphorylase kinase, delta)	
Immunogen Catalog Number: AG28000	Calculated MW: 17 kDa	
	Observed MW: 17-22 kDa	

Applications

Tested Applications:
WB, IHC, IF/ICC, Indirect ELISA

Species Specificity:
human, mouse, rat

Background Information

Calmodulin is the most widely distributed and most versatile member of a family of calcium-binding proteins which probably serve as receptors for the Ca²⁺ signal. Through the regulation of a wide variety of intracellular enzymes, calmodulin plays a key role in many physiological processes (PMID: 6313166).

Storage

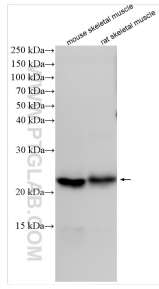
Storage:
Store at -80°C.

Storage Buffer:
PBS only, pH7.3

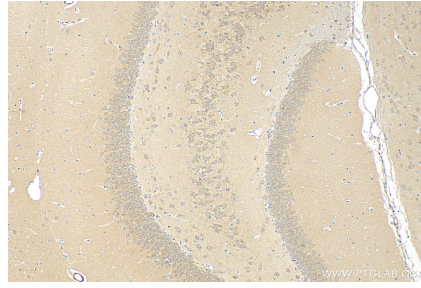
For technical support and original validation data for this product please contact:
T: 1 (888) 4PTGLAB (1-888-478-4522) (toll free in USA), or 1(312) 455-8498 (outside USA) E: proteintech@ptglab.com
W: ptglab.com

This product is exclusively available under Proteintech Group brand and is not available to purchase from any other manufacturer.

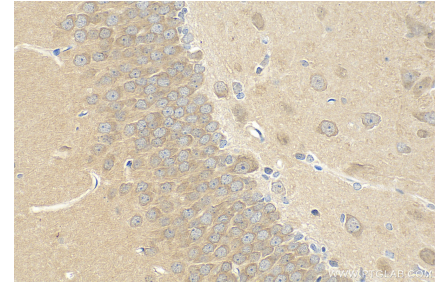
Selected Validation Data



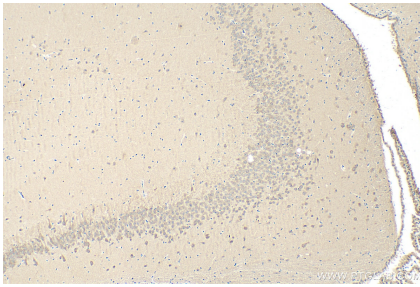
Various lysates were subjected to SDS PAGE followed by western blot with 28270-1-AP (Calmodulin 1/2/3 antibody) at dilution of 1:1000 incubated at room temperature for 1.5 hours. This data was developed using the same antibody clone with 28270-1-PBS in a different storage buffer formulation.



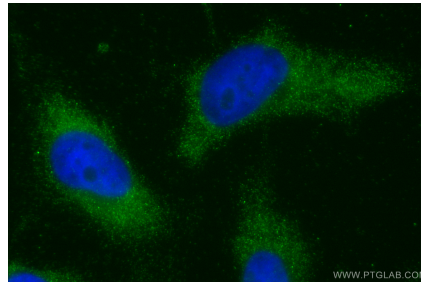
Immunohistochemical analysis of paraffin-embedded rat brain tissue slide using 28270-1-AP (Calmodulin 1/2/3 antibody) at dilution of 1:200 (under 10x lens). Heat mediated antigen retrieval with Tris-EDTA buffer (pH 9.0). This data was developed using the same antibody clone with 28270-1-PBS in a different storage buffer formulation.



Immunohistochemical analysis of paraffin-embedded rat brain tissue slide using 28270-1-AP (Calmodulin 1/2/3 antibody) at dilution of 1:200 (under 40x lens). Heat mediated antigen retrieval with Tris-EDTA buffer (pH 9.0). This data was developed using the same antibody clone with 28270-1-PBS in a different storage buffer formulation.



Immunohistochemical analysis of paraffin-embedded mouse brain tissue slide using 28270-1-AP (Calmodulin 1/2/3 antibody) at dilution of 1:200 (under 10x lens). Heat mediated antigen retrieval with Tris-EDTA buffer (pH 9.0). This data was developed using the same antibody clone with 28270-1-PBS in a different storage buffer formulation.



Immunofluorescent analysis of (-20°C Ethanol) fixed HeLa cells using Calmodulin 1/2/3 antibody (28270-1-AP) at dilution of 1:200 and CoralLite®488-Conjugated AffiniPure Goat Anti-Rabbit IgG(H+L). This data was developed using the same antibody clone with 28270-1-PBS in a different storage buffer formulation.