

For Research Use Only

PTPRCAP Polyclonal antibody

Catalog Number: 28286-1-AP

1 Publications



Basic Information

Catalog Number:

28286-1-AP

Size:

150ul, Concentration: 700 ug/ml by Nanodrop and 300 ug/ml by Bradford method using BSA as the standard;

Source:

Rabbit

Isotype:

IgG

Immunogen Catalog Number:

AG27236

GenBank Accession Number:

BC113859

GeneID (NCBI):

5790

UNIPROT ID:

Q14761

Full Name:

protein tyrosine phosphatase, receptor type, C-associated protein

Calculated MW:

206 aa, 21 kDa

Observed MW:

32 kDa

Purification Method:

Antigen affinity purification

Recommended Dilutions:

WB 1:500-1:2000

IHC 1:50-1:500

Applications

Tested Applications:

WB, IHC, ELISA

Cited Applications:

WB

Species Specificity:

Human

Cited Species:

human

Note-IHC: suggested antigen retrieval with TE buffer pH 9.0; (*) Alternatively, antigen retrieval may be performed with citrate buffer pH 6.0

Positive Controls:

WB : Jurkat cells, K-562 cells, Raji cells

IHC : human spleen tissue, human tonsillitis tissue

Notable Publications

Author	Pubmed ID	Journal	Application
Paolo Marchetti	35201443	Discov Oncol	WB

Storage

Storage:

Store at -20°C. Stable for one year after shipment.

Storage Buffer:

PBS with 0.02% sodium azide and 50% glycerol pH 7.3.

Aliquoting is unnecessary for -20°C storage

*** 20ul sizes contain 0.1% BSA

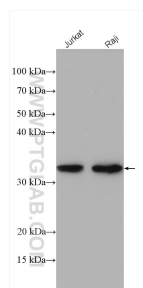
For technical support and original validation data for this product please contact:

T: 1 (888) 4PTGLAB (1-888-478-4522) (toll free in USA), or 1(312) 455-8498 (outside USA)

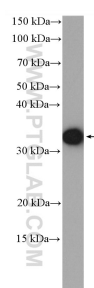
E: proteintech@ptglab.com
W: ptglab.com

This product is exclusively available under Proteintech Group brand and is not available to purchase from any other manufacturer.

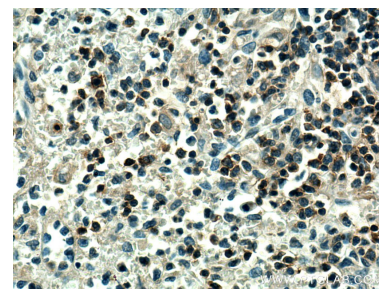
Selected Validation Data



Various lysates were subjected to SDS PAGE followed by western blot with 28286-1-AP (PTPRCAP antibody) at dilution of 1:1000 incubated at room temperature for 1.5 hours.



Raji cells were subjected to SDS PAGE followed by western blot with 28286-1-AP (PTPRCAP antibody) at dilution of 1:600 incubated at room temperature for 1.5 hours.



Immunohistochemical analysis of paraffin-embedded human spleen tissue slide using 28286-1-AP (PTPRCAP antibody) at dilution of 1:200 (under 40x lens). Heat mediated antigen retrieval with Tris-EDTA buffer (pH 9.0).



Immunohistochemical analysis of paraffin-embedded human spleen tissue slide using 28286-1-AP (PTPRCAP antibody) at dilution of 1:200 (under 10x lens). Heat mediated antigen retrieval with Tris-EDTA buffer (pH 9.0).