

For Research Use Only

LYVE1 Polyclonal antibody

Catalog Number: 28321-1-AP



Basic Information

Catalog Number: 28321-1-AP	GenBank Accession Number: BC026231	Purification Method: Antigen affinity purification
Size: 150ul , Concentration: 200 µg/ml by Nanodrop;	GeneID (NCBI): 10894	Recommended Dilutions: WB 1:500-1:2000
Source: Rabbit	Full Name: lymphatic vessel endothelial hyaluronan receptor 1	
Isotype: IgG	Calculated MW: 322 aa, 35 kDa	
Immunogen Catalog Number: AG28131	Observed MW: 70 kDa	

Applications

Tested Applications: WB, ELISA	Positive Controls: WB : bEnd.3 cells, mouse heart tissue, rat heart tissue
Species Specificity: Human, mouse, rat	

Background Information

LYVE1 is a 322-amino acid type-I integral membrane glycoprotein primarily expressed on lymphatic endothelial cells. LYVE1 is a CD44 homologue. It acts as a receptor and binds to both soluble and immobilized hyaluronan. LYVE1 may function in lymphatic hyaluronan transport and have a role in tumor metastasis.

Storage

Storage:
Store at -20°C. Stable for one year after shipment.
Storage Buffer:
PBS with 0.02% sodium azide and 50% glycerol pH 7.3.
Aliquoting is unnecessary for -20°C storage

*** 20ul sizes contain 0.1% BSA

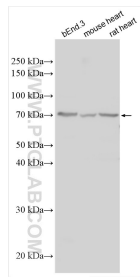
For technical support and original validation data for this product please contact:

T: 1 (888) 4PTGLAB (1-888-478-4522) (toll free in USA), or 1(312) 455-8498 (outside USA)

E: proteintech@ptglab.com
W: ptglab.com

This product is exclusively available under Proteintech Group brand and is not available to purchase from any other manufacturer.

Selected Validation Data



Various lysates were subjected to SDS PAGE followed by western blot with 28321-1-AP (LYVE1 antibody) at dilution of 1:1000 incubated at room temperature for 1.5 hours.