

For Research Use Only

GIPR Polyclonal antibody

Catalog Number: 28322-1-AP

1 Publications



Basic Information

Catalog Number:

28322-1-AP

Size:

150ul, Concentration: 800 ug/ml by Nanodrop and 267 ug/ml by Bradford method using BSA as the standard;

Source:

Rabbit

Isotype:

IgG

Immunogen Catalog Number:

AG28143

GenBank Accession Number:

BC093723

GeneID (NCBI):

2696

UNIPROT ID:

P48546

Full Name:

gastric inhibitory polypeptide receptor

Calculated MW:

466 aa, 53 kDa

Observed MW:

53 kDa

Purification Method:

Antigen affinity purification

Recommended Dilutions:

WB 1:500-1:1000

IHC 1:50-1:500

Applications

Tested Applications:

WB, IHC, ELISA

Cited Applications:

WB

Species Specificity:

human, mouse

Cited Species:

mouse

Positive Controls:

WB : HT-1080 cells, K-562 cells

IHC : mouse brain tissue,

Note-IHC: suggested antigen retrieval with TE buffer pH 9.0; (*) Alternatively, antigen retrieval may be performed with citrate buffer pH 6.0

Background Information

GIPR, or Gastric Inhibitory Polypeptide Receptor, plays a crucial role in glucose metabolism and insulin secretion. It is a G protein-coupled receptor (GPCR). It belongs to the B1 class of this receptor family, which is involved in various physiological processes including fat generation, pancreatic beta-cell proliferation, and insulin release.

Notable Publications

Author	Pubmed ID	Journal	Application
Lidia Cantacorp	37590249	PLoS One	WB

Storage

Storage:

Store at -20°C. Stable for one year after shipment.

Storage Buffer:

PBS with 0.02% sodium azide and 50% glycerol pH 7.3.

Aliquoting is unnecessary for -20°C storage

*** 20ul sizes contain 0.1% BSA

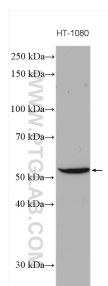
For technical support and original validation data for this product please contact:

T: 1 (888) 4PTGLAB (1-888-478-4522) (toll free in USA), or 1(312) 455-8498 (outside USA)

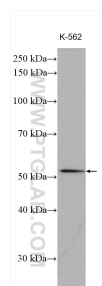
E: proteintech@ptglab.com
W: ptglab.com

This product is exclusively available under Proteintech Group brand and is not available to purchase from any other manufacturer.

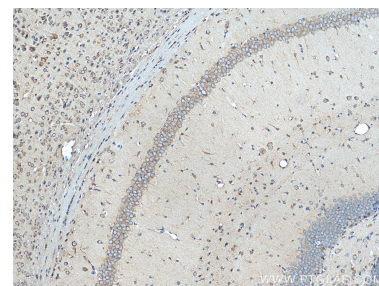
Selected Validation Data



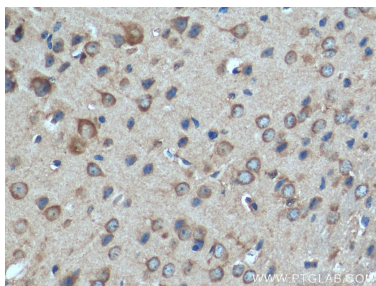
HT-1080 cells were subjected to SDS PAGE followed by western blot with 28322-1-AP (GIPR antibody) at dilution of 1:800 incubated at room temperature for 1.5 hours.



K-562 cells were subjected to SDS PAGE followed by western blot with 28322-1-AP (GIPR antibody) at dilution of 1:1500 incubated at room temperature for 1.5 hours.



Immunohistochemical analysis of paraffin-embedded mouse brain tissue slide using 28322-1-AP (GIPR antibody) at dilution of 1:200 (under 10x lens). Heat mediated antigen retrieval with Tris-EDTA buffer (pH 9.0).



Immunohistochemical analysis of paraffin-embedded mouse brain tissue slide using 28322-1-AP (GIPR antibody) at dilution of 1:200 (under 40x lens). Heat mediated antigen retrieval with Tris-EDTA buffer (pH 9.0).