

For Research Use Only

# GIPR Polyclonal antibody, PBS Only

Catalog Number: 28322-1-PBS



## Basic Information

**Catalog Number:**

28322-1-PBS

**Size:**

100ug, Concentration: 1 mg/ml by Nanodrop;

**Source:**

Rabbit

**Isotype:**

IgG

**Immunogen Catalog Number:**

AG28143

**GenBank Accession Number:**

BC093723

**GeneID (NCBI):**

2696

**UNIPROT ID:**

P48546

**Full Name:**

gastric inhibitory polypeptide receptor

**Calculated MW:**

466 aa, 53 kDa

**Observed MW:**

53 kDa

**Purification Method:**

Antigen affinity purification

## Applications

**Tested Applications:**

WB, IHC, Indirect ELISA

**Species Specificity:**

human, mouse

## Background Information

GIPR, or Gastric Inhibitory Polypeptide Receptor, plays a crucial role in glucose metabolism and insulin secretion. It is a G protein-coupled receptor (GPCR). It belongs to the B1 class of this receptor family, which is involved in various physiological processes including fat generation, pancreatic beta-cell proliferation, and insulin release.

## Storage

**Storage:**

Store at -80°C.

**Storage Buffer:**

PBS only, pH7.3

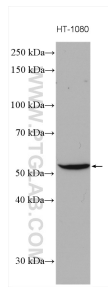
For technical support and original validation data for this product please contact:

T: 1 (888) 4PTGLAB (1-888-478-4522) (toll free in USA), or 1(312) 455-8498 (outside USA)

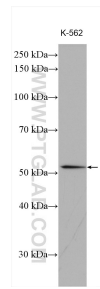
E: [proteintech@ptglab.com](mailto:proteintech@ptglab.com)  
W: [ptglab.com](http://ptglab.com)

**This product is exclusively available under Proteintech Group brand and is not available to purchase from any other manufacturer.**

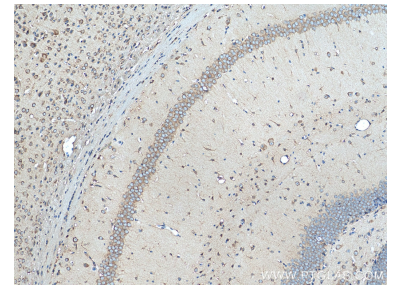
## Selected Validation Data



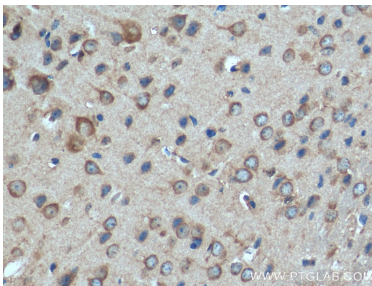
HT-1080 cells were subjected to SDS PAGE followed by western blot with 28322-1-AP (GIPR antibody) at dilution of 1:800 incubated at room temperature for 1.5 hours. This data was developed using the same antibody clone with 28322-1-PBS in a different storage buffer formulation.



K-562 cells were subjected to SDS PAGE followed by western blot with 28322-1-AP (GIPR antibody) at dilution of 1:1500 incubated at room temperature for 1.5 hours. This data was developed using the same antibody clone with 28322-1-PBS in a different storage buffer formulation.



Immunohistochemical analysis of paraffin-embedded mouse brain tissue slide using 28322-1-AP (GIPR antibody) at dilution of 1:200 (under 10x lens). Heat mediated antigen retrieval with Tris-EDTA buffer (pH 9.0). This data was developed using the same antibody clone with 28322-1-PBS in a different storage buffer formulation.



Immunohistochemical analysis of paraffin-embedded mouse brain tissue slide using 28322-1-AP (GIPR antibody) at dilution of 1:200 (under 40x lens). Heat mediated antigen retrieval with Tris-EDTA buffer (pH 9.0). This data was developed using the same antibody clone with 28322-1-PBS in a different storage buffer formulation.