

For Research Use Only

# UBE2D1/2/3/4 Polyclonal antibody

Catalog Number: 28328-1-AP

1 Publications



## Basic Information

Catalog Number:

28328-1-AP

Size:

150ul, Concentration: 800 ug/ml by Nanodrop and 333 ug/ml by Bradford method using BSA as the standard;

Source:

Rabbit

Isotype:

IgG

Immunogen Catalog Number:

AG28736

GenBank Accession Number:

BC033349

GeneID (NCBI):

7322

UNIPROT ID:

P62837

Full Name:

ubiquitin-conjugating enzyme E2D 2 (UBC4/5 homolog, yeast)

Calculated MW:

17 kDa

Observed MW:

14-17 kDa

Purification Method:

Antigen affinity purification

Recommended Dilutions:

WB 1:500-1:2000

IHC 1:250-1:1000

## Applications

Tested Applications:

WB, IHC, ELISA

Cited Applications:

WB

Species Specificity:

Human, Mouse, Rat

Cited Species:

mouse

**Note-IHC: suggested antigen retrieval with TE buffer pH 9.0; (\*) Alternatively, antigen retrieval may be performed with citrate buffer pH 6.0**

Positive Controls:

WB: HEK-293 cells, MCF-7 cells, NIH/3T3 cells, mouse testis tissue, mouse kidney tissue, rat kidney tissue, PC-12 cells

IHC: human breast cancer tissue,

## Background Information

Ubiquitination is a post-translational modification pathway or is part of the specific protein-degradation pathway by the 26S proteasome. Ubiquitination of a target protein involves multistep enzymatic reaction catalyzed by a cascade of enzymes including Ub-activating enzymes (E1s), Ub-conjugating enzymes (E2s) and Ub ligases (E3s) (PMID: 23542885). UBE2D family, which has 4 members named as UBE2D1/2/3/4, is an E2 ubiquitin-conjugating enzyme family in the ubiquitin-proteasome system. This antibody can recognize all the four members of UBE2D due to the high homology.

## Notable Publications

Author	Pubmed ID	Journal	Application
Cheng-Jie Zhou	36513638	Nat Commun	WB

## Storage

Storage:

Store at -20°C. Stable for one year after shipment.

Storage Buffer:

PBS with 0.02% sodium azide and 50% glycerol pH 7.3.

Aliquoting is unnecessary for -20°C storage

\*\*\* 20ul sizes contain 0.1% BSA

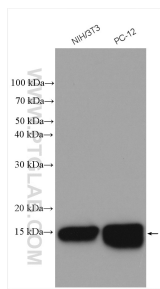
For technical support and original validation data for this product please contact:

T: 1 (888) 4PTGLAB (1-888-478-4522) (toll free in USA), or 1(312) 455-8498 (outside USA)

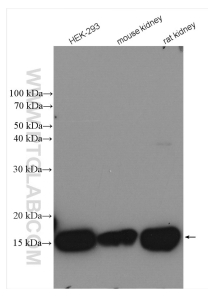
E: [proteintech@ptglab.com](mailto:proteintech@ptglab.com)  
W: [ptglab.com](http://ptglab.com)

This product is exclusively available under Proteintech Group brand and is not available to purchase from any other manufacturer.

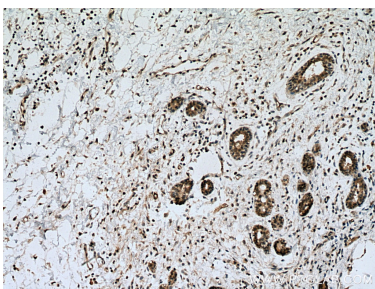
## Selected Validation Data



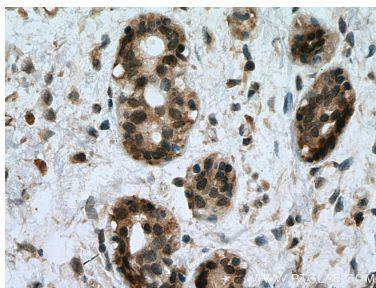
Various lysates were subjected to SDS PAGE followed by western blot with 28328-1-AP (UBE2D1/2/3/4 antibody) at dilution of 1:1000 incubated at room temperature for 1.5 hours.



Various lysates were subjected to SDS PAGE followed by western blot with 28328-1-AP (UBE2D1/2/3/4 antibody) at dilution of 1:1000 incubated at room temperature for 1.5 hours.



Immunohistochemical analysis of paraffin-embedded human breast cancer tissue slide using 28328-1-AP (UBE2D1/2/3/4 antibody) at dilution of 1:500 (under 10x lens). Heat mediated antigen retrieval with Tris-EDTA buffer (pH 9.0).



Immunohistochemical analysis of paraffin-embedded human breast cancer tissue slide using 28328-1-AP (UBE2D1/2/3/4 antibody) at dilution of 1:500 (under 40x lens). Heat mediated antigen retrieval with Tris-EDTA buffer (pH 9.0).