

For Research Use Only

# GFRAL Polyclonal antibody

Catalog Number: 28335-1-AP



## Basic Information

<b>Catalog Number:</b> 28335-1-AP	<b>GenBank Accession Number:</b> NM_207410	<b>Purification Method:</b> Antigen affinity purification
<b>Size:</b> 150ul , Concentration: 800 ug/ml by Nanodrop;	<b>GeneID (NCBI):</b> 389400	<b>Recommended Dilutions:</b> WB 1:500-1:2000
<b>Source:</b> Rabbit	<b>Full Name:</b> GDNF family receptor alpha like	
<b>Isotype:</b> IgG	<b>Calculated MW:</b> 45 aa, 85 kDa	
<b>Immunogen Catalog Number:</b> AG28504	<b>Observed MW:</b> 45-60 kDa	

## Applications

<b>Tested Applications:</b> WB, ELISA	<b>Positive Controls:</b> WB : mouse cerebellum tissue, rat brain tissue
<b>Species Specificity:</b> human, mouse, rat	

## Background Information

GFRAL (GDNF family receptor alpha-like), also called C6orf144, is the brainstem-restricted receptor for GDF15 hormone, which triggers an aversive response, characterized by nausea, vomiting, and/or loss of appetite in response to various stresses (PMID: 28846097, 28846098, 28846099, 28953886, 36630958). The GDF15-GFRAL signal induces expression of genes involved in metabolism, such as lipid metabolism in adipose tissues (PMID: 32661391). GFRAL is a single-pass membrane protein, and localizes to the plasma membrane. It is mainly expressed in the hindbrain, and its mainstream molecular weight is 45-60 kd.

## Storage

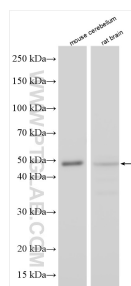
**Storage:**  
Store at -20°C. Stable for one year after shipment.  
**Storage Buffer:**  
PBS with 0.02% sodium azide and 50% glycerol pH 7.3.  
**Aliquoting is unnecessary for -20°C storage**

\*\*\* 20ul sizes contain 0.1% BSA

For technical support and original validation data for this product please contact:  
T: 1 (888) 4PTGLAB (1-888-478-4522) (toll free in USA), or 1(312) 455-8498 (outside USA)  
E: [proteintech@ptglab.com](mailto:proteintech@ptglab.com)  
W: [ptglab.com](http://ptglab.com)

This product is exclusively available under Proteintech Group brand and is not available to purchase from any other manufacturer.

## Selected Validation Data



Various lysates were subjected to SDS PAGE followed by western blot with 28335-1-AP (GFRA1 antibody) at dilution of 1:1000 incubated at room temperature for 1.5 hours.