

For Research Use Only

# EEA1 Polyclonal antibody

Catalog Number: 28347-1-AP

Featured Product

8 Publications



## Basic Information

### Catalog Number:

28347-1-AP

### Size:

150ul, Concentration: 650 ug/ml by Nanodrop;

### Source:

Rabbit

### Isotype:

IgG

### Immunogen Catalog Number:

AG28814

### GenBank Accession Number:

NM\_003566

### GeneID (NCBI):

8411

### UNIPROT ID:

Q15075

### Full Name:

early endosome antigen 1

### Calculated MW:

162 kDa

### Observed MW:

170 kDa

### Purification Method:

Antigen affinity purification

### Recommended Dilutions:

WB 1:2000-1:16000

IHC 1:50-1:500

IF/ICC 1:200-1:800

## Applications

### Tested Applications:

WB, IHC, IF/ICC, ELISA

### Cited Applications:

WB, IF

### Species Specificity:

Human, Mouse, Rat

### Cited Species:

human, mouse, monkey

**Note-IHC: suggested antigen retrieval with TE buffer pH 9.0; (\*) Alternatively, antigen retrieval may be performed with citrate buffer pH 6.0**

### Positive Controls:

**WB:** A431 cells, HepG2 cells, HeLa cells, Jurkat cells, NIH/3T3 cells, C6 cells

**IHC:** human breast cancer tissue, mouse brain tissue

**IF/ICC:** HepG2 cells,

## Background Information

Early endosome antigen 1 (EEA1) is a marker of early endosomes and has an important role in endosomal trafficking. EEA1 contains coiled-coil regions and an FYVE-type zinc finger which interacts with phosphatidylinositol-3-phosphate. EEA1 functions as a Rab5 effector, mediates endosome docking and, together with SNAREs, leads to membrane fusion.

## Notable Publications

Author	Pubmed ID	Journal	Application
Huawei Wang	34865123	Nucleic Acids Res	IF
Yafeng Dou	35603194	Front Immunol	IF
Yanqiu Zhang	35393432	Cell Death Dis	IF

## Storage

### Storage:

Store at -20°C. Stable for one year after shipment.

### Storage Buffer:

PBS with 0.02% sodium azide and 50% glycerol, pH7.3

Aliquoting is unnecessary for -20°C storage

\*\*\* 20ul sizes contain 0.1% BSA

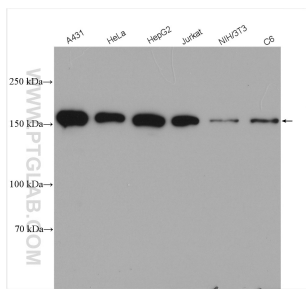
For technical support and original validation data for this product please contact:

T: 1 (888) 4PTGLAB (1-888-478-4522) (toll free in USA), or 1(312) 455-8498 (outside USA)

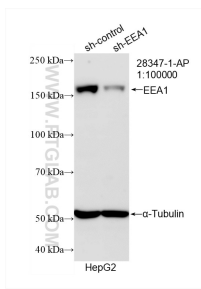
E: [proteintech@ptglab.com](mailto:proteintech@ptglab.com)  
W: [ptglab.com](http://ptglab.com)

This product is exclusively available under Proteintech Group brand and is not available to purchase from any other manufacturer.

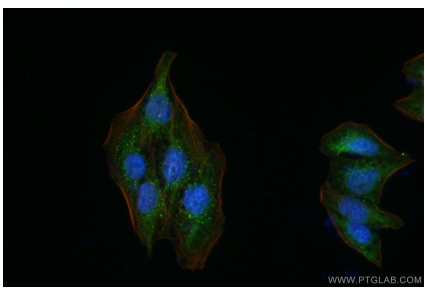
## Selected Validation Data



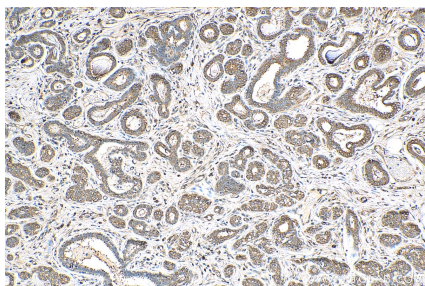
Various lysates were subjected to SDS PAGE followed by western blot with 28347-1-AP (EEA1 antibody) at dilution of 1:8000 incubated at room temperature for 1.5 hours.



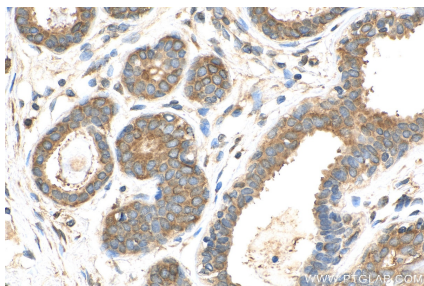
WB result of EEA1 antibody (28347-1-AP; 1:100000; incubated at room temperature for 1.5 hours) with sh-Control and sh-EEA1 transfected HepG2 cells.



Immunofluorescent analysis of (4% PFA) fixed HepG2 cells using EEA1 antibody (28347-1-AP) at dilution of 1:400 and CoraLite®488-Conjugated Goat Anti-Rabbit IgG(H+L) (SA00013-2).



Immunohistochemical analysis of paraffin-embedded human breast cancer tissue slide using 28347-1-AP (EEA1 antibody) at dilution of 1:200 (under 10x lens). Heat mediated antigen retrieval with Tris-EDTA buffer (pH 9.0).



Immunohistochemical analysis of paraffin-embedded human breast cancer tissue slide using 28347-1-AP (EEA1 antibody) at dilution of 1:200 (under 40x lens). Heat mediated antigen retrieval with Tris-EDTA buffer (pH 9.0).