

For Research Use Only

PLCG1 Polyclonal antibody

Catalog Number: 28362-1-AP **1 Publications**



Basic Information

Catalog Number: 28362-1-AP	GenBank Accession Number: GeneID (NCBI): 5335	Purification Method: Antigen affinity purification
Size: 150ul , Concentration: 850 µg/ml by Nanodrop and 400 µg/ml by Bradford method using BSA as the standard;	Full Name: phospholipase C, gamma 1	Recommended Dilutions: WB 1:1000-1:4000
Source: Rabbit	Calculated MW: 149 kDa	
Isotype: IgG	Observed MW: 149 kDa	
Immunogen Catalog Number: AG27218		

Applications

Tested Applications: WB, ELISA	Positive Controls: WB : HEK-293 cells, Jurkat cells, MCF-7 cells
Cited Applications: WB	
Species Specificity: Human	
Cited Species: human	

Background Information

Notable Publications

Author	Pubmed ID	Journal	Application
Yao-Qi Zhou	37012514	Cell Oncol (Dordr)	WB

Storage

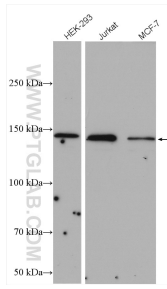
Storage:
Store at -20°C. Stable for one year after shipment.
Storage Buffer:
PBS with 0.02% sodium azide and 50% glycerol pH 7.3.
Aliquoting is unnecessary for -20°C storage

*** 20ul sizes contain 0.1% BSA

For technical support and original validation data for this product please contact:
T: 1 (888) 4PTGLAB (1-888-478-4522) (toll free in USA), or 1(312) 455-8498 (outside USA)
E: proteintech@ptglab.com
W: ptglab.com

This product is exclusively available under Proteintech Group brand and is not available to purchase from any other manufacturer.

Selected Validation Data



Various lysates were subjected to SDS PAGE followed by western blot with 28362-1-AP (PLCG1 antibody) at dilution of 1:2000 incubated at room temperature for 1.5 hours.