

For Research Use Only

CRLF2 Polyclonal antibody, PBS Only

Catalog Number: 28365-1-PBS



Basic Information

Catalog Number: 28365-1-PBS	GenBank Accession Number: NM_001012288	Purification Method: Antigen affinity purification
Size: 100ug, Concentration: 1 mg/ml by Nanodrop;	GeneID (NCBI): 64109	
Source: Rabbit	UNIPROT ID: Q9HC73	
Isotype: IgG	Full Name: cytokine receptor-like factor 2	
Immunogen Catalog Number: AG26842	Calculated MW: 42 kDa	
	Observed MW: 42 kDa	

Applications

Tested Applications:
WB, Indirect ELISA

Species Specificity:
human

Background Information

Cytokine receptor-like factor 2 (CRLF2), also known as the thymic stromal derived lymphopoietin receptor (TSLPR), which in combination with the interleukin 7 receptor α chain (IL-7R) forms the receptor for thymic stromal lymphopoietin. CRLF2 is a type I cytokine receptor. CRLF2 rearrangements occur either as a translocation to the immunoglobulin heavy-chain enhancer region (IGH-CRLF2) or by a deletion of upstream PAR1 that leads to joining of CRLF2 to adjacent P2RY8. CRLF2 is expressed in heart, skeletal muscle, kidney and adult and fetal liver and is primarily expressed in dendrites and monocytes. (PMID: 20807819; 31644323; 33485429)

Storage

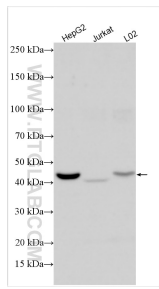
Storage:
Store at -80°C.

Storage Buffer:
PBS only, pH7.3

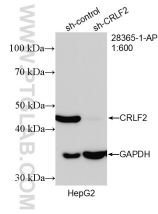
For technical support and original validation data for this product please contact:
T: 1 (888) 4PTGLAB (1-888-478-4522) (toll free in USA), or 1(312) 455-8498 (outside USA) E: proteintech@ptglab.com
W: ptglab.com

This product is exclusively available under Proteintech Group brand and is not available to purchase from any other manufacturer.

Selected Validation Data



Various lysates were subjected to SDS PAGE followed by western blot with 28365-1-AP (CRLF2 antibody) at dilution of 1:1000 incubated at room temperature for 1.5 hours. This data was developed using the same antibody clone with 28365-1-PBS in a different storage buffer formulation.



WB result of CRLF2 antibody (28365-1-AP; 1:600; incubated at room temperature for 1.5 hours) with sh-Control and sh-CRLF2 transfected HepG2 cells. This data was developed using the same antibody clone with 28365-1-PBS in a different storage buffer formulation.