

For Research Use Only

ARPC1B Polyclonal antibody

Catalog Number: 28368-1-AP

Featured Product

1 Publications



Basic Information

Catalog Number:

28368-1-AP

Size:

150ul, Concentration: 600 µg/ml by Nanodrop and 300 µg/ml by Bradford method using BSA as the standard;

Source:

Rabbit

Isotype:

IgG

Immunogen Catalog Number:

AG29001

GenBank Accession Number:

BC007555

GeneID (NCBI):

10095

Full Name:

actin related protein 2/3 complex, subunit 1B, 41kDa

Calculated MW:

41 kDa

Observed MW:

37 kDa

Purification Method:

Antigen affinity purification

Recommended Dilutions:

WB 1:1000-1:6000

IP 0.5-4.0 µg for IP and 1:500-1:2000 for WB

IHC 1:250-1:1000

Applications

Tested Applications:

IHC, IP, WB, ELISA

Cited Applications:

WB

Species Specificity:

Human, mouse

Cited Species:

human, mouse

Note-IHC: suggested antigen retrieval with TE buffer pH 9.0; (*) Alternatively, antigen retrieval may be performed with citrate buffer pH 6.0

Positive Controls:

WB : HeLa cells, HEK-293T cells

IP : HeLa cells,

IHC : human colon cancer tissue, human lung cancer tissue, mouse spleen tissue

Background Information

ARPC1B also known as ARC41, p41-ARC, or p40-ARC, is one of seven subunits of the human Arp2/3 protein complex, that belongs to the SOP2 family. ARPC1B localizes on centrosomes and has a distinct role in centrosomal homeostasis. ARPC1B is both a physiological activator and substrate of Aurora A kinase, and these interactions help to maintain mitotic integrity in mammalian cells. In recent research, ARPC1B is selected as a candidate prediction marker for sensitivity of Choroidal malignant melanomas to radiotherapy.

Notable Publications

Author	Pubmed ID	Journal	Application
Junning Huang	37304283	Front Immunol	WB

Storage

Storage:

Store at -20°C. Stable for one year after shipment.

Storage Buffer:

PBS with 0.02% sodium azide and 50% glycerol pH 7.3.

Aliquoting is unnecessary for -20°C storage

*** 20ul sizes contain 0.1% BSA

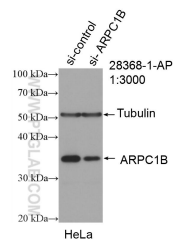
For technical support and original validation data for this product please contact:

T: 1 (888) 4PTGLAB (1-888-478-4522) (toll free in USA), or 1(312) 455-8498 (outside USA)

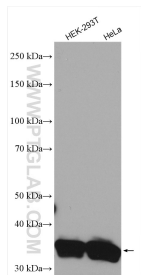
E: proteintech@ptglab.com
W: ptglab.com

This product is exclusively available under Proteintech Group brand and is not available to purchase from any other manufacturer.

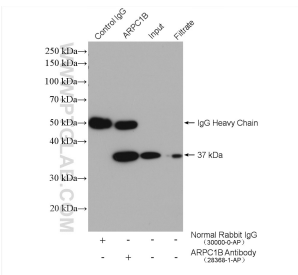
Selected Validation Data



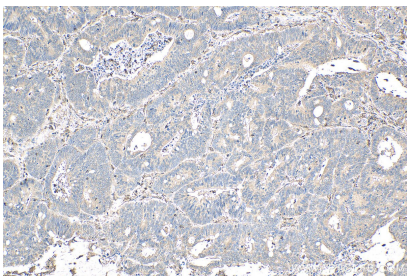
WB result of ARPC1B antibody (28368-1-AP; 1:3000; incubated at room temperature for 1.5 hours) with sh-Control and sh-ARPC1B transfected HeLa cells.



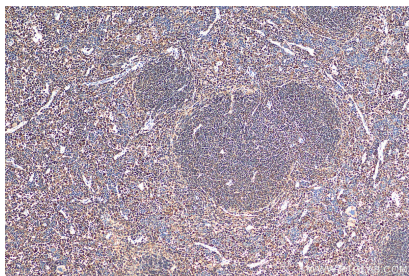
Various lysates were subjected to SDS PAGE followed by western blot with 28368-1-AP (ARPC1B antibody) at dilution of 1:3000 incubated at room temperature for 1.5 hours.



IP result of anti-ARPC1B (IP:28368-1-AP, 4ug; Detection:28368-1-AP 1:1000) with HeLa cells lysate 1600 ug.



Immunohistochemical analysis of paraffin-embedded human colon cancer tissue slide using 28368-1-AP (ARPC1B antibody) at dilution of 1:500 (under 10x lens). Heat mediated antigen retrieval with Tris-EDTA buffer (pH 9.0).



Immunohistochemical analysis of paraffin-embedded mouse spleen tissue slide using 28368-1-AP (ARPC1B antibody) at dilution of 1:200 (under 10x lens). Heat mediated antigen retrieval with Tris-EDTA buffer (pH 9.0).