

For Research Use Only

# COMP Polyclonal antibody

Catalog Number: 28369-1-AP

4 Publications



## Basic Information

### Catalog Number:

28369-1-AP

### Size:

150ul, Concentration: 400 ug/ml by Nanodrop;

### Source:

Rabbit

### Isotype:

IgG

### Immunogen Catalog Number:

AG28749

### GenBank Accession Number:

BC033676

### GeneID (NCBI):

1311

### UNIPROT ID:

P49747

### Full Name:

cartilage oligomeric matrix protein

### Calculated MW:

757 aa, 83 kDa

### Observed MW:

80-110 kDa

### Purification Method:

Antigen affinity purification

### Recommended Dilutions:

WB 1:500-1:1000

IHC 1:50-1:500

IF/ICC 1:50-1:500

## Applications

### Tested Applications:

WB, IHC, IF/ICC, ELISA

### Cited Applications:

WB, IHC, IF

### Species Specificity:

human, mouse

### Cited Species:

human, mouse

**Note-IHC: suggested antigen retrieval with TE buffer pH 9.0; (\*) Alternatively, antigen retrieval may be performed with citrate buffer pH 6.0**

### Positive Controls:

WB : mouse skeletal muscle tissue, mouse cartilage tissue, rat cartilage tissue, pig cartilage tissue

IHC : human liver cancer tissue,

IF/ICC : HepG2 cells,

## Background Information

COMP is a secreted pentameric glycoprotein built from modular units and belongs to the thrombospondin protein family. COMP is expressed by hypertrophic chondrocytes and osteoblasts during endochondral ossification, and its expression is increased during fracture healing. COMP is involved in the assembly of collagen fibrils and other structural matrix components. COMP interacts with a number of cartilage ECM proteins, including fibronectin, collagen I, II IX, XII, and XIV, matrilins, as well as proteoglycans such as aggrecan and others.

## Notable Publications

Author	Pubmed ID	Journal	Application
Lin Chen	35273447	Int J Chron Obstruct Pulmon Dis	WB
Aijing Liu	39187041	Eur J Pharmacol	IF
Yueqing Gong	38584705	Front Mol Biosci	IHC

## Storage

### Storage:

Store at -20°C. Stable for one year after shipment.

### Storage Buffer:

PBS with 0.02% sodium azide and 50% glycerol pH 7.3.

Aliquoting is unnecessary for -20°C storage

\*\*\* 20ul sizes contain 0.1% BSA

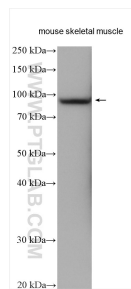
For technical support and original validation data for this product please contact:

T: 1 (888) 4PTGLAB (1-888-478-4522) (toll free in USA), or 1(312) 455-8498 (outside USA)

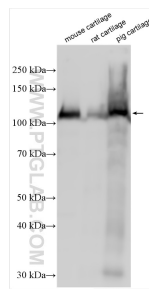
E: [proteintech@ptglab.com](mailto:proteintech@ptglab.com)  
W: [ptglab.com](http://ptglab.com)

This product is exclusively available under Proteintech Group brand and is not available to purchase from any other manufacturer.

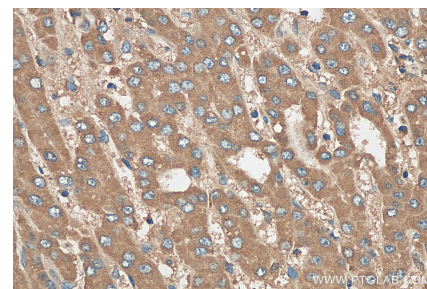
## Selected Validation Data



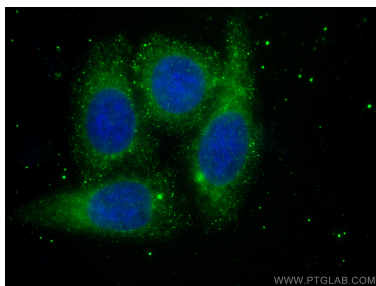
Mouse skeletal muscle tissue were subjected to SDS PAGE followed by western blot with 28369-1-AP (COMP antibody) at dilution of 1:800 incubated at room temperature for 1.5 hours.



Various lysates were subjected to SDS PAGE followed by western blot with 28369-1-AP (COMP antibody) at dilution of 1:2000 incubated at room temperature for 1.5 hours.



Immunohistochemical analysis of paraffin-embedded human liver cancer tissue slide using 28369-1-AP (COMP antibody) at dilution of 1:200 (under 40x lens). Heat mediated antigen retrieval with Tris-EDTA buffer (pH 9.0).



Immunofluorescent analysis of (-20°C Ethanol) fixed HepG2 cells using COMP antibody (28369-1-AP) at dilution of 1:200 and Multi-rAb CoraLite® Plus 488-Goat Anti-Rabbit Recombinant Secondary Antibody (H+L) (RGAR002).