

For Research Use Only

Integrin beta-6 Polyclonal antibody

Catalog Number: 28378-1-AP

2 Publications



Basic Information

Catalog Number: 28378-1-AP	GenBank Accession Number: BC121178	Purification Method: Antigen affinity purification
Size: 150ul , Concentration: 1000 ug/ml by Nanodrop;	GeneID (NCBI): 3694	Recommended Dilutions: WB 1:500-1:2000 IHC 1:50-1:500
Source: Rabbit	UNIPROT ID: P18564	
Isotype: IgG	Full Name: integrin, beta 6	
Immunogen Catalog Number: AG29002	Calculated MW: 788 aa, 86 kDa	
	Observed MW: 97 kDa	

Applications

Tested Applications: WB, IHC, ELISA	Positive Controls: WB : A431 cells, IHC : mouse lung tissue,
Cited Applications: WB, IHC	
Species Specificity: Human, Mouse	
Cited Species: human	
Note-IHC: suggested antigen retrieval with TE buffer pH 9.0; (*) Alternatively, antigen retrieval may be performed with citrate buffer pH 6.0	

Background Information

ITGB6 belongs to the integrin beta chain family. ITGB6 is a receptor for fibronectin and cytactin. It recognizes the sequence R-G-D in its ligands. Internalisation of integrin alpha-V/beta-6 via clathrin-mediated endocytosis promotes carcinoma cell invasion.

Notable Publications

Author	Pubmed ID	Journal	Application
Junjian Yu	38344200	Front Oncol	IHC
Xiang Feng	38205211	Transl Lung Cancer Res	WB,IHC

Storage

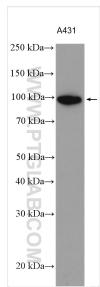
Storage:
Store at -20°C. Stable for one year after shipment.
Storage Buffer:
PBS with 0.02% sodium azide and 50% glycerol pH 7.3.
Aliquoting is unnecessary for -20°C storage

*** 20ul sizes contain 0.1% BSA

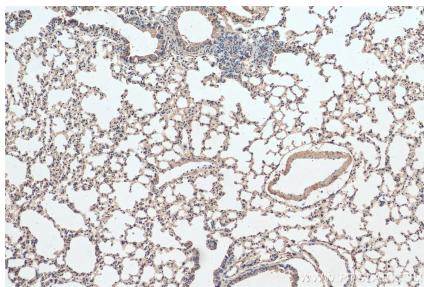
For technical support and original validation data for this product please contact:
T: 1 (888) 4PTGLAB (1-888-478-4522) (toll free in USA), or 1(312) 455-8498 (outside USA)
E: proteintech@ptglab.com
W: ptglab.com

This product is exclusively available under Proteintech Group brand and is not available to purchase from any other manufacturer.

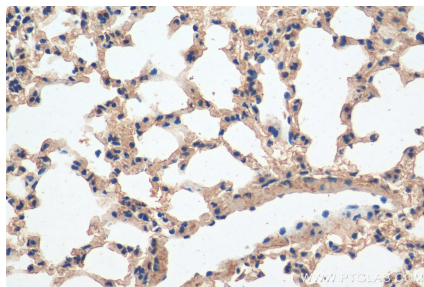
Selected Validation Data



A431 cells were subjected to SDS PAGE followed by western blot with 28378-1-AP (Integrin beta-6 antibody) at dilution of 1:1000 incubated at room temperature for 1.5 hours.



Immunohistochemical analysis of paraffin-embedded mouse lung tissue slide using 28378-1-AP (Integrin beta-6 antibody) at dilution of 1:200 (under 10x lens). Heat mediated antigen retrieval with Tris-EDTA buffer (pH 9.0).



Immunohistochemical analysis of paraffin-embedded mouse lung tissue slide using 28378-1-AP (Integrin beta-6 antibody) at dilution of 1:200 (under 40x lens). Heat mediated antigen retrieval with Tris-EDTA buffer (pH 9.0).