

For Research Use Only

# KAT2A/GCN5 Polyclonal antibody

Catalog Number: 28390-1-AP

Featured Product



## Basic Information

### Catalog Number:

28390-1-AP

### Size:

150ul, Concentration: 1000 ug/ml by Nanodrop;

### Source:

Rabbit

### Isotype:

IgG

### Immunogen Catalog Number:

AG29005

### GenBank Accession Number:

BC032743

### GeneID (NCBI):

2648

### UNIPROT ID:

Q92830

### Full Name:

K(lysine) acetyltransferase 2A

### Calculated MW:

94 kDa

### Observed MW:

94 kDa

### Purification Method:

Antigen affinity purification

### Recommended Dilutions:

WB 1:2000-1:16000

IP 0.5-4.0 ug for 1.0-3.0 mg of total protein lysate

IF/ICC 1:50-1:500

## Applications

### Tested Applications:

WB, IF/ICC, IP, ELISA

### Species Specificity:

human

### Positive Controls:

WB : HEK-293 cells, HUVEC cells, HeLa cells, LNCaP cells, MCF-7 cells

IP : LNCaP cells, hTERT-RPE1 cells

IF/ICC : HeLa cells,

## Background Information

GCN5, encoded by KAT2A, is a member of nuclear A-type histone acetyltransferase (HAT) which has direct impact on gene transcription. Additionally, GCN5 has roles in cell cycle regulation, DNA replication, and DNA repair, highlighting it as key player in the maintenance of genome stability. GCN5 is a coactivator of c-MYC oncogene protein and has oncogenic roles in various cancers.

## Storage

### Storage:

Store at -20°C. Stable for one year after shipment.

### Storage Buffer:

PBS with 0.02% sodium azide and 50% glycerol pH 7.3.

Aliquoting is unnecessary for -20°C storage

\*\*\* 20ul sizes contain 0.1% BSA

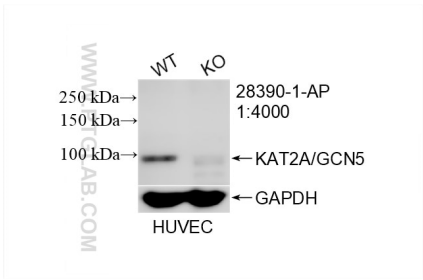
For technical support and original validation data for this product please contact:

T: 1 (888) 4PTGLAB (1-888-478-4522) (toll free in USA), or 1(312) 455-8498 (outside USA)

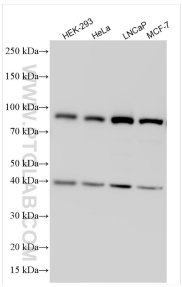
E: [proteintech@ptglab.com](mailto:proteintech@ptglab.com)  
W: [ptglab.com](http://ptglab.com)

This product is exclusively available under Proteintech Group brand and is not available to purchase from any other manufacturer.

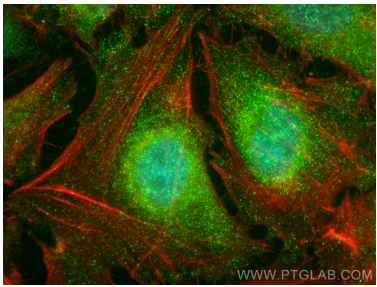
Selected Validation Data



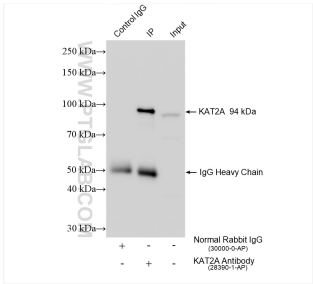
WB result of KAT2A/GCN5 antibody (28390-1-AP; 1:4000; room temperature for 1.5 hours) with wild-type and KAT2A/GCN5 knockout HUVEC cells.



Various lysates were subjected to SDS PAGE followed by western blot with 28390-1-AP (KAT2A/GCN5 antibody) at dilution of 1:8000 incubated at room temperature for 1.5 hours.



Immunofluorescent analysis of (4% PFA) fixed HeLa cells using KAT2A/GCN5 antibody (28390-1-AP) at dilution of 1:200 and CoraLite®488-Conjugated AffiniPure Goat Anti-Rabbit IgG(H+L) (SA00013-2), CL594-Phalloidin (red).



IP result of anti-KAT2A/GCN5 (IP:28390-1-AP, 4ug; Detection:28390-1-AP 1:6000) with LNCaP cells lysate 1200 ug.