

For Research Use Only

# MSTO1 Polyclonal antibody

Catalog Number: 28400-1-AP

Featured Product



## Basic Information

Catalog Number:

28400-1-AP

Size:

150ul, Concentration: 450 ug/ml by Nanodrop and 300 ug/ml by Bradford method using BSA as the standard;

Source:

Rabbit

Isotype:

IgG

Immunogen Catalog Number:

AG29067

GenBank Accession Number:

BC002535

GeneID (NCBI):

55154

UNIPROT ID:

Q9BUK6

Full Name:

misato homolog 1 (Drosophila)

Observed MW:

57-62 kDa

Purification Method:

Antigen affinity purification

Recommended Dilutions:

WB 1:500-1:2000

IHC 1:500-1:2000

## Applications

Tested Applications:

WB, IHC, ELISA

Species Specificity:

human

**Note-IHC: suggested antigen retrieval with TE buffer pH 9.0; (\*) Alternatively, antigen retrieval may be performed with citrate buffer pH 6.0**

Positive Controls:

WB : HeLa cells, HepG2 cells

IHC : human ovary cancer tissue,

## Background Information

MSTO1, also named as LST005 and SLTP005, belongs to the misato family. Human MSTO1 is a ubiquitously expressed, evolutionary conserved protein with homologous regions to GTPases. MSTO1 is a cytoplasmic protein that modulates mitochondrial dynamics by promoting mitochondrial fusion. MSTO1 has 7 isoforms produced by alternative splicing. (PMID: 33612823)

## Storage

Storage:

Store at -20°C. Stable for one year after shipment.

Storage Buffer:

PBS with 0.02% sodium azide and 50% glycerol pH 7.3.

Aliquoting is unnecessary for -20°C storage

\*\*\* 20ul sizes contain 0.1% BSA

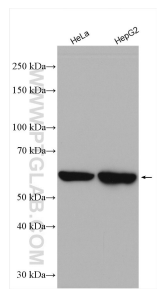
For technical support and original validation data for this product please contact:

T: 1 (888) 4PTGLAB (1-888-478-4522) (toll free in USA), or 1(312) 455-8498 (outside USA)

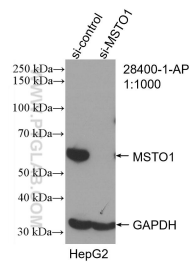
E: [proteintech@ptglab.com](mailto:proteintech@ptglab.com)  
W: [ptglab.com](http://ptglab.com)

This product is exclusively available under Proteintech Group brand and is not available to purchase from any other manufacturer.

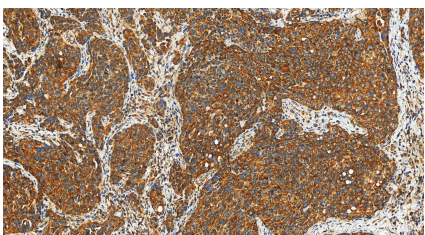
Selected Validation Data



Various lysates were subjected to SDS PAGE followed by western blot with 28400-1-AP (MSTO1 antibody) at dilution of 1:1000 incubated at room temperature for 1.5 hours.



WB result of MSTO1 antibody (28400-1-AP; 1:1000; incubated at room temperature for 1.5 hours) with sh-Control and sh-MSTO1 transfected HepG2 cells.



Immunohistochemical analysis of paraffin-embedded human ovary cancer tissue slide using 28400-1-AP (MSTO1 antibody) at dilution of 1:1000 (under 20x lens). Heat mediated antigen retrieval with Tris-EDTA buffer (pH 9.0).