

For Research Use Only

SEMA4C Polyclonal antibody

Catalog Number: 28402-1-AP



Basic Information

Catalog Number: 28402-1-AP	GenBank Accession Number: BC109104	Purification Method: Antigen affinity purification
Size: 150ul, Concentration: 900 µg/ml by Nanodrop;	GeneID (NCBI): 54910	Recommended Dilutions: WB 1:1000-1:4000 IHC 1:50-1:500
Source: Rabbit	Full Name: sema domain, immunoglobulin domain (Ig), transmembrane domain (TM) and short cytoplasmic domain, (semaphorin) 4C	
Isotype: IgG	Calculated MW: 833 aa, 93 kDa	
Immunogen Catalog Number: AG29143	Observed MW: 93 kDa	

Applications

Tested Applications:

IHC, WB, ELISA

Species Specificity:

Human, mouse, rat

Note-IHC: suggested antigen retrieval with TE buffer pH 9.0; (*) Alternatively, antigen retrieval may be performed with citrate buffer pH 6.0

Positive Controls:

WB: fetal human brain tissue, mouse brain tissue, rat brain tissue

IHC: human ovary tumor tissue, human stomach cancer tissue

Background Information

SEMA4C is a member of transmembrane semaphorin proteins which regulate axonal guidance in the developing nervous system. Furthermore, studies have demonstrated that sema4C was also implicated in biological events outside the nervous system, such as cell migration, tumor development, and terminal myogenic differentiation (PMID: 36010604). SEMA4C is highly expressed in breast, lung, cervical, and liver cancers. SEMA4C is involved in oncogenic signaling and is a potential therapeutic target for invasive breast cancer, hepatocellular carcinoma, glioma, and osteosarcoma (PMID: 33177246).

Storage

Storage:

Store at -20°C. Stable for one year after shipment.

Storage Buffer:

PBS with 0.02% sodium azide and 50% glycerol pH 7.3.

Aliquoting is unnecessary for -20°C storage

*** 20ul sizes contain 0.1% BSA

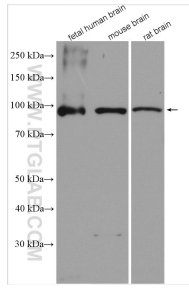
For technical support and original validation data for this product please contact:

T: 1 (888) 4PTGLAB (1-888-478-4522) (toll free in USA), or 1(312) 455-8498 (outside USA)

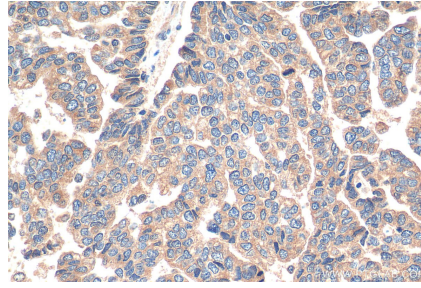
E: proteintech@ptglab.com
W: ptglab.com

This product is exclusively available under Proteintech Group brand and is not available to purchase from any other manufacturer.

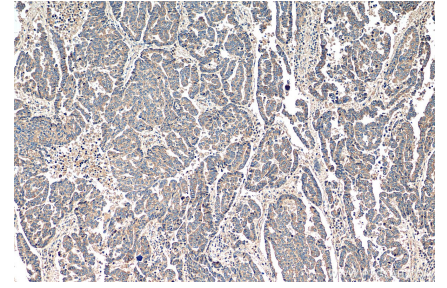
Selected Validation Data



Various lysates were subjected to SDS PAGE followed by western blot with 28402-1-AP (SEMA4C antibody) at dilution of 1:2000 incubated at room temperature for 1.5 hours.



Immunohistochemical analysis of paraffin-embedded human ovary tumor tissue slide using 28402-1-AP (SEMA4C antibody) at dilution of 1:200 (under 40x lens). Heat mediated antigen retrieval with Tris-EDTA buffer (pH 9.0).



Immunohistochemical analysis of paraffin-embedded human ovary tumor tissue slide using 28402-1-AP (SEMA4C antibody) at dilution of 1:200 (under 10x lens). Heat mediated antigen retrieval with Tris-EDTA buffer (pH 9.0).