

For Research Use Only

TH1L Polyclonal antibody

Catalog Number: 28417-1-AP



Basic Information

Catalog Number: 28417-1-AP	GenBank Accession Number: BC014952	Purification Method: Antigen affinity purification
Size: 150ul , Concentration: 700 µg/ml by Nanodrop and 333 µg/ml by Bradford method using BSA as the standard;	GeneID (NCBI): 51497	Recommended Dilutions: WB 1:500-1:3000 IF 1:50-1:500
Source: Rabbit	Full Name: TH1-like (Drosophila)	
Isotype: IgG	Calculated MW: 66 kDa	
Immunogen Catalog Number: AG29262	Observed MW: 60 kDa	

Applications

Tested Applications: IF, WB, ELISA	Positive Controls:
Species Specificity: Human	WB : HeLa cells, Jurkat cells, MCF-7 cells IF : HeLa cells,

Background Information

Storage

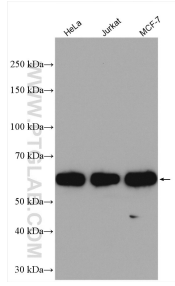
Storage:
Store at -20°C. Stable for one year after shipment.
Storage Buffer:
PBS with 0.02% sodium azide and 50% glycerol pH 7.3.
Aliquoting is unnecessary for -20°C storage

*** 20ul sizes contain 0.1% BSA

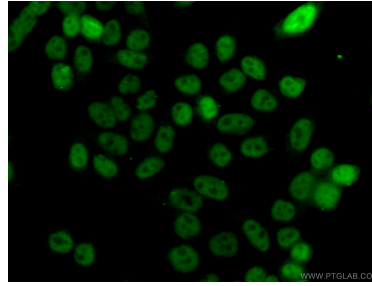
For technical support and original validation data for this product please contact:
T: 1 (888) 4PTGLAB (1-888-478-4522) (toll free in USA), or 1(312) 455-8498 (outside USA) E: proteintech@ptglab.com
W: ptglab.com

This product is exclusively available under Proteintech Group brand and is not available to purchase from any other manufacturer.

Selected Validation Data



Various lysates were subjected to SDS PAGE followed by western blot with 28417-1-AP (TH1L antibody) at dilution of 1:1500 incubated at room temperature for 1.5 hours.



Immunofluorescent analysis of (4% PFA) fixed HeLa cells using 28417-1-AP (TH1L antibody) at dilution of 1:100 and Coralite488-Conjugated AffiniPure Goat Anti-Rabbit IgG(H+L).