

For Research Use Only

# ILT-3/LILRB4 Polyclonal antibody

Catalog Number: 28422-1-AP

1 Publications



## Basic Information

Catalog Number:

28422-1-AP

Size:

150ul, Concentration: 800 ug/ml by Nanodrop;

Source:

Rabbit

Isotype:

IgG

Immunogen Catalog Number:

AG28928

GenBank Accession Number:

BC026309

GeneID (NCBI):

11006

UNIPROT ID:

Q8NHJ6

Full Name:

leukocyte immunoglobulin-like receptor, subfamily B (with TM and ITIM domains), member 4

Calculated MW:

448 aa, 49 kDa

Observed MW:

49 kDa

Purification Method:

Antigen affinity purification

Recommended Dilutions:

WB 1:1000-1:4000

## Applications

Tested Applications:

WB, ELISA

Cited Applications:

WB, IF

Species Specificity:

Human, mouse

Cited Species:

mouse

Positive Controls:

WB : mouse lung tissue, mouse heart tissue

## Background Information

LILRB4 is an inhibitory receptor in the LILR family mainly expressed on normal and malignant human cells of myeloid origin. LILRB4 is activated and subsequently recruits adaptors to cytoplasmic immunoreceptor tyrosine inhibitory motifs to initiate different signaling cascades, thus playing an important role in physiological and pathological conditions, including autoimmune diseases, microbial infections, and cancers.

## Notable Publications

Author	Pubmed ID	Journal	Application
Jiaxin Yin	39527158	Cancer Immunol Immunother	WB,IF

## Storage

Storage:

Store at -20°C. Stable for one year after shipment.

Storage Buffer:

PBS with 0.02% sodium azide and 50% glycerol pH 7.3.

Aliquoting is unnecessary for -20°C storage

\*\*\* 20ul sizes contain 0.1% BSA

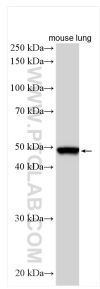
For technical support and original validation data for this product please contact:

T: 1 (888) 4PTGLAB (1-888-478-4522) (toll free in USA), or 1(312) 455-8498 (outside USA)

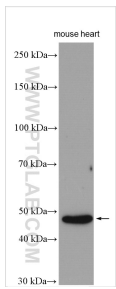
E: [proteintech@ptglab.com](mailto:proteintech@ptglab.com)  
W: [ptglab.com](http://ptglab.com)

This product is exclusively available under Proteintech Group brand and is not available to purchase from any other manufacturer.

# Selected Validation Data



Mouse lung tissue were subjected to SDS PAGE followed by western blot with 28422-1-AP (ILRB4 antibody) at dilution of 1:2000 incubated at room temperature for 1.5 hours.



mouse heart tissue were subjected to SDS PAGE followed by western blot with 28422-1-AP (ILRB4 antibody) at dilution of 1:1000 incubated at room temperature for 1.5 hours.